

WEST BAY SANITARY DISTRICT

SAN MATEO COUNTY CALIFORNIA

SAUSAL VISTA PUMP STATION PHASE II

REPLACEMENT OF THE SAUSAL VISTA PUMP STATION

GENERAL NOTES:

1. THE FOLLOWING NOTES ARE ESTABLISHED MERELY TO GUIDE THE CONTRACTOR AS TO THE GENERAL ITEMS OF WORK INVOLVED AND ARE NOT INTENDED TO COVER COMPLETE SCOPE OF WORK. THE CONTRACTOR SHALL COMPLETE ALL WORK AS PER CONSTRUCTION PLANS AND SPECIFICATIONS.
2. CONTRACTOR AGREES THAT THEY SHALL ASSUME SOLE AND COMPLETE RESPONSIBILITY FOR JOB SITE CONDITIONS DURING THE COURSE OF CONSTRUCTION OF THIS PROJECT, INCLUDING SAFETY OF ALL PERSONS AND PROPERTY; THAT THIS REQUIREMENT SHALL APPLY CONTINUOUSLY AND NOT BE LIMITED TO NORMAL WORKING HOURS; AND THAT THE CONTRACTOR SHALL DEFEND, INDEMNIFY AND HOLD THE OWNER AND THE ENGINEER HARMLESS FROM ANY AND ALL LIABILITY, REAL OR ALLEGED, IN CONNECTION WITH THE PERFORMANCE OF WORK ON THIS PROJECT, EXCEPT FOR LIABILITY ARISING FROM THE SOLE NEGLIGENCE OF THE OWNER OR THE ENGINEER.
3. ALL SANITARY SEWERS SHALL BE CONSTRUCTED IN ACCORDANCE WITH THESE PLANS, THE SPECIAL TECHNICAL PROVISIONS AND THE STANDARD SPECIFICATIONS OF THE WEST BAY SANITARY DISTRICT. ALL WORK NOT SPECIFICALLY COVERED IN THE STANDARD SPECIFICATIONS OF WEST BAY SANITARY DISTRICT AND THE SPECIAL TECHNICAL PROVISIONS FOR THESE IMPROVEMENTS SHALL BE DONE IN ACCORDANCE WITH THE STATE OF CALIFORNIA, DEPARTMENT OF TRANSPORTATION SPECIFICATIONS, LATEST EDITION.
4. THE WORK SHOWN ON THESE PLANS IS WITHIN THE JURISDICTION OF THE TOWN OF PORTOLA VALLEY, AND SHALL BE PERFORMED IN ACCORDANCE WITH THE PROVISIONS AND THE REQUIREMENTS OF THE ENCROACHMENT PERMIT.
5. THE LOCATIONS AND TYPES OF EXISTING UTILITIES SHOWN ON THE IMPROVEMENT PLANS ARE BASED ON INFORMATION FURNISHED BY SERVICING AGENCIES AND IS TO BE SUPPLEMENTED BY ACTUAL FIELD INVESTIGATION AND VERIFICATIONS BY CONTRACTOR. ATTENTION IS DIRECTED TO VERIFICATIONS OF DEPTHS AND EXACT LOCATIONS OF EXISTING SERVICES WHETHER SHOWN ON THE PLAN OR NOT AND THE CONTRACTOR SHALL TAKE PRECAUTIONARY MEASURES TO PRESERVE AND AVOID DAMAGES TO EXISTING UTILITIES ENCOUNTERED. NOTE: EXISTING UTILITY SERVICES TO HOUSES ARE NOT SHOWN ON THE PLANS. CONTRACTOR SHALL NOTIFY PG&E, AT&T, CALIFORNIA WATER AND UNDERGROUND SERVICE ALERT (USA) AT (800) 642-2444, PRIOR TO ANY FIELD INVESTIGATION.
6. BEDDING MATERIAL SHALL BE AN IMPORTED VIRGIN GRANULAR MATERIAL FREE FROM VEGETABLE MATTER AND OTHER ORGANIC SUBSTANCES AND SHALL BE OF SUCH NATURE THAT IT CAN BE COMPACTED READILY UNDER WATERING, ROLLING AND TAMPING TO FORM A FIRM AND STABLE BASE. BEDDING MATERIAL SHALL CONFORM TO THE GRADATION REQUIREMENTS SHOWN ON THE DETAIL DRAWING.
7. RELATIVE COMPACTION AND IN-PLACE DENSITY SHALL BE DETERMINED AS DEFINED BY THE TEST METHOD OF ASTM D1557.
8. EXISTING FLOWS MUST BE MAINTAINED BY CONTRACTOR AT ALL TIMES DURING CONSTRUCTION. CONTRACTOR SHALL NOTIFY PROPERTY OWNERS OF ANY INTERRUPTION OF SEWER SERVICES PRIOR TO ANY WORK ON EXISTING SEWER PIPES. SEWAGE FLOWS SHALL BE MAINTAINED BY PUMPING.
9. ALL EXISTING IMPROVEMENTS, INCLUDING BUT NOT LIMITED TO LANDSCAPING, DRIVEWAYS, CURB, GUTTER, SIDEWALK, CULVERTS, DRAINS, STRIPING (PAINTED OR THERMOPLASTIC) AND MONUMENTS, SHALL BE RESTORED TO THE CONDITION IN WHICH THEY WERE OR BETTER BEFORE THE EXCAVATION WAS MADE. PAYMENT FOR RESTORATION OF EXISTING IMPROVEMENTS TO THEIR ORIGINAL CONDITION WILL NOT BE MADE AND SHALL BE CONSIDERED AS INCLUDED IN THE VARIOUS CONTRACT ITEMS OF WORK INVOLVED.
10. THE CONTRACTOR SHALL COMPLY WITH ALL RELEVANT PROVISIONS OF FEDERAL, STATE, AND LOCAL CODES AND REGULATIONS IN REGARD TO TRAFFIC CONTROL. THE CONTRACTOR SHALL SUBMIT A TRAFFIC CONTROL PLAN PRIOR TO THE START OF WORK TO BE APPROVED BY THE DISTRICT AND THE LOCAL JURISDICTION.
11. THE CONTRACTOR SHALL CONDUCT THEIR OPERATION AS TO OFFER THE LEAST POSSIBLE OBSTRUCTION AND INCONVENIENCE TO THE PUBLIC. THROUGHOUT THE PERFORMANCE OF THE WORK, OR IN CONNECTION TO THIS CONTRACT, THE CONTRACTOR SHALL CONSTRUCT AND ADEQUATELY MAINTAIN SUITABLE AND SAFE CROSSINGS OVER TRENCHES, DRIVEWAY ACCESS AND SUCH DETOURS AS ARE NECESSARY TO CARE FOR PUBLIC PEDESTRIAN TRAFFIC.
12. CONTRACTOR SHALL CONFORM TO ALL APPLICABLE OSHA RULES, REGULATIONS, AND ORDERS ESTABLISHED BY FEDERAL AND STATE AGENCIES BEFORE ENTERING SANITARY SEWER MANHOLES.
13. IF THE CONTRACTOR PLANS TO USE MACHINERY WITH TRACKS, PLYWOOD SHALL BE PLACED IN FRONT AND/OR BACK OF THE MACHINE (DEPENDING ON THE TRAVEL DIRECTION), SO THAT SURFACE DESTRUCTION IS AVOIDED. ANY SURFACE DESTRUCTION SHALL BE REPAIRED BY THE CONTRACTOR AT NO COST TO THE DISTRICT, TO THE SATISFACTION OF THE LOCAL JURISDICTION.
14. THE REPLACEMENT OF SEWER MAINS SHALL BE CONSTRUCTED AT THE DESIGNED HORIZONTAL ALIGNMENT AND THE PROPOSED GRADE (DEPTH) AS SHOWN ON THE PLANS. THE EXISTING SEWER MAINS SHALL BE USED AS STATIONING CONTROL LINE. THE CONTRACTOR SHOULD BE ALERTED TO THE NEED FOR EXCAVATION BELOW EXISTING PIPE INVERT FOR PLACEMENT OF BEDDING MATERIALS AS SHOWN ON THE DETAIL DRAWINGS.
15. CONCRETE FOR MANHOLES SHALL MEET THE REQUIREMENTS OF CLASS 1 CONCRETE AS DEFINED IN CALTRANS STANDARD SPECIFICATIONS, LATEST EDITION.
16. CONTRACTOR SHALL PROVIDE PUMPS OR OTHER MEANS TO PREVENT SEWER WASTE BACKUP DUE TO THEIR WORK ON THE EXISTING SEWERS. CONTRACTOR SHALL BE RESPONSIBLE FOR CLEANUP AND DAMAGES CAUSED BY THEIR NEGLIGENCE, AND SHALL PAY ANY FINES DUE TO THEIR NEGLIGENCE.
17. PRIOR TO THE START OF SEWER CONSTRUCTION, THE CONTRACTOR SHALL PERFORM BYPASSING OPERATIONS. CONSTRUCTION CAN NOT BEGIN UNTIL BYPASSING OPERATIONS ARE APPROVED BY THE DISTRICT.
18. THE CONTRACTOR SHALL AT ALL TIMES HAVE AT THE JOB SITE SUFFICIENT PUMPING MACHINERY READY FOR IMMEDIATE USE. THE TRENCHES AND EXCAVATIONS SHALL BE KEPT ENTIRELY FREE OF WATER WHILE CONCRETE IS BEING POURED OR PIPE IS BEING LAID AND UNTIL CONCRETE OR MORTAR HAS SET HARD. WATER SHALL BE DISPOSED OF IN SUCH A MANNER AS WILL NOT CAUSE INJURY TO PUBLIC OR PRIVATE PROPERTY, NOR BE A MENACE TO PUBLIC HEALTH.
19. ALL PROPERTY LINES SHOWN ARE APPROXIMATED FROM ASSESSORS PARCEL MAPS OR FROM RECORD INFORMATION, AND THEIR LOCATION MAY NOT BE EXACT. THE PROPERTY LINES SHALL BE USED AS REFERENCE TO LOCATE SERVICE LATERAL CONNECTION TO EACH PROPERTY. IT IS THE CONTRACTOR'S RESPONSIBILITY TO LOCATE THE EXACT LOCATION OF EACH PROPERTY LATERAL FOR CONNECTION.
20. THE NUMBER OF LATERALS SHOWN ON THE PLANS IS BASED ON T.V. INVESTIGATION LOGS, WHICH MAY INCLUDE BOTH LIVE AND DEAD LATERALS. FINAL NUMBERS TO BE USED FOR PAYMENT IS THE NUMBER OF LIVE LATERALS CONNECTED. THE CONTRACTOR SHALL SAWCUT THE ABANDONED LATERALS AT THE EDGE OF THE TRENCH AND PLUG THEM IN ACCORDANCE WITH THE DISTRICT'S STANDARDS.

UNAUTHORIZED CHANGES & USES: The engineer preparing these plans will not be responsible for, or liable for, unauthorized changes to or uses of these plans. All changes to the plans must be in writing and must be approved by the preparer of these plans.

Construction contractor agrees that in accordance with generally accepted construction practices, construction contractor will be required to assume sole and complete responsibility for job site conditions during the course of construction of the project, including safety of all persons and property; that this requirement shall be made to apply continuously and not be limited to normal working hours, and construction contractor further agrees to defend, indemnify and hold design professional harmless from any and all liability, real or alleged, in connection with the performance of work on this project, excepting liability arising from the sole negligence of design professional.

BOARD OF DIRECTORS

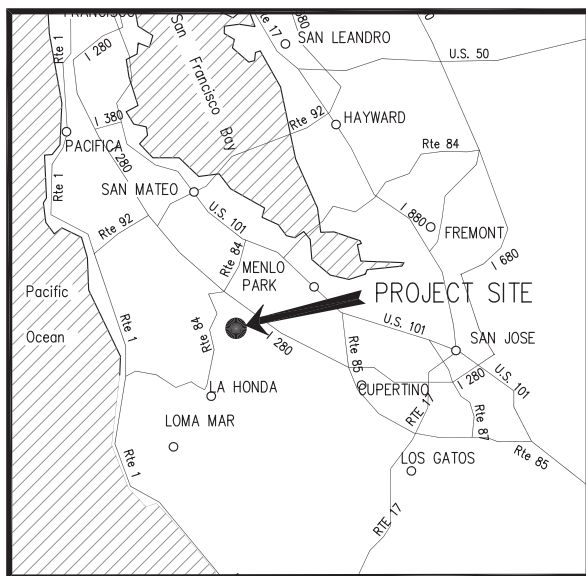
EDWARD P. MORITZ	PRESIDENT
FRAN DEHN	SECRETARY
RONALD W. SHEPHERD	TREASURER
DAVID WALKER	DIRECTOR
ROY THIELE-SARDINA	DIRECTOR

INDEX OF DRAWINGS

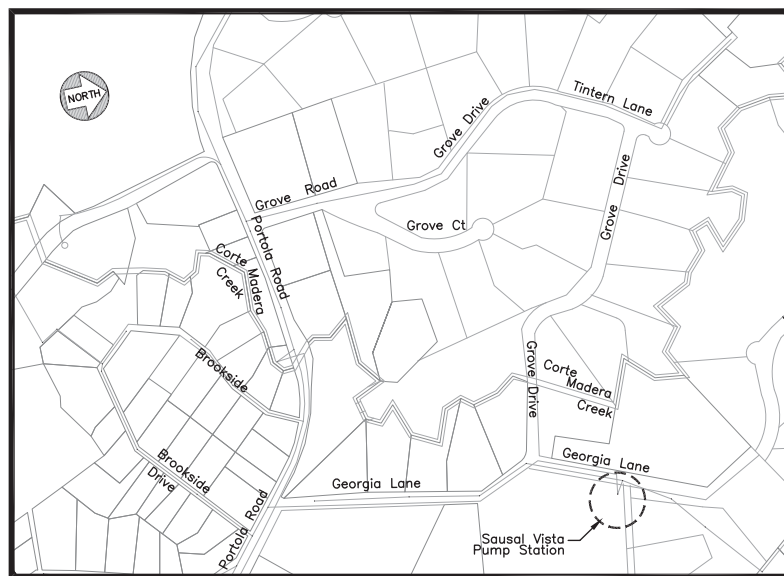
SHEET #	DESCRIPTION
1	COVER SHEET
2	PUMP STATION DEMOLITION PLAN
3	PUMP STATION IMPROVEMENT PLAN AND SECTION
4	PORTOLA ROAD AND GEORGIA LANE PIPING DEMOLITION PLAN
5	CORTE MADERA PUMP STATION ABANDONMENT
6	DETAIL SHEET
7	DETAIL SHEET
E1	ELECTRICAL PLAN
E2	ELECTRICAL DETAILS

LEGEND

-----	EXISTING PVC FORCE MAIN	PP/JP	EXISTING JOINT POLE/ POWER POLE
-----	EXISTING SS GRAVITY MAIN	G	EXISTING GAS VALVE
-----	SANITARY SEWER TO BE INSTALLED	W	EXISTING WATER VALVE
SSFM	EXISTING SANITARY SEWER FORCE MAIN	WM	EXISTING WATER METER
-----	TV	CO	EXISTING CLEAN OUT
-----	CABLE	⊙	EXISTING FIRE HYDRANT
G	EXISTING GAS LINE	S/D	EXISTING SEWER / STORM DRAIN MANHOLE
E	EXISTING UNDERGROUND ELECTRICAL LINE	ELEC	EXISTING ELECTRICAL PULL BOX
W	EXISTING WATER LINE	CB	EXISTING CATCH BASIN
-----	EXISTING STORM DRAIN	TS	TRAFFIC SIGN
=====	ROLLED CURB AND GUTTER		
=====	CURB AND GUTTER		



REGIONAL LOCATION NTS

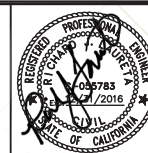


PORTOLA VALLEY VICINITY LOCATION NTS

DATE:	9/15/2015	9/15/15	ISSUED FOR BID
SCALE:	AS NOTED		
DESIGNED:	RJL		
DRAWN:	JJF		
CHECKED:	RJL		
PROJ. ENGR:	RJL		
BY	DATE	DESCRIPTION OF REVISIONS	APP'D

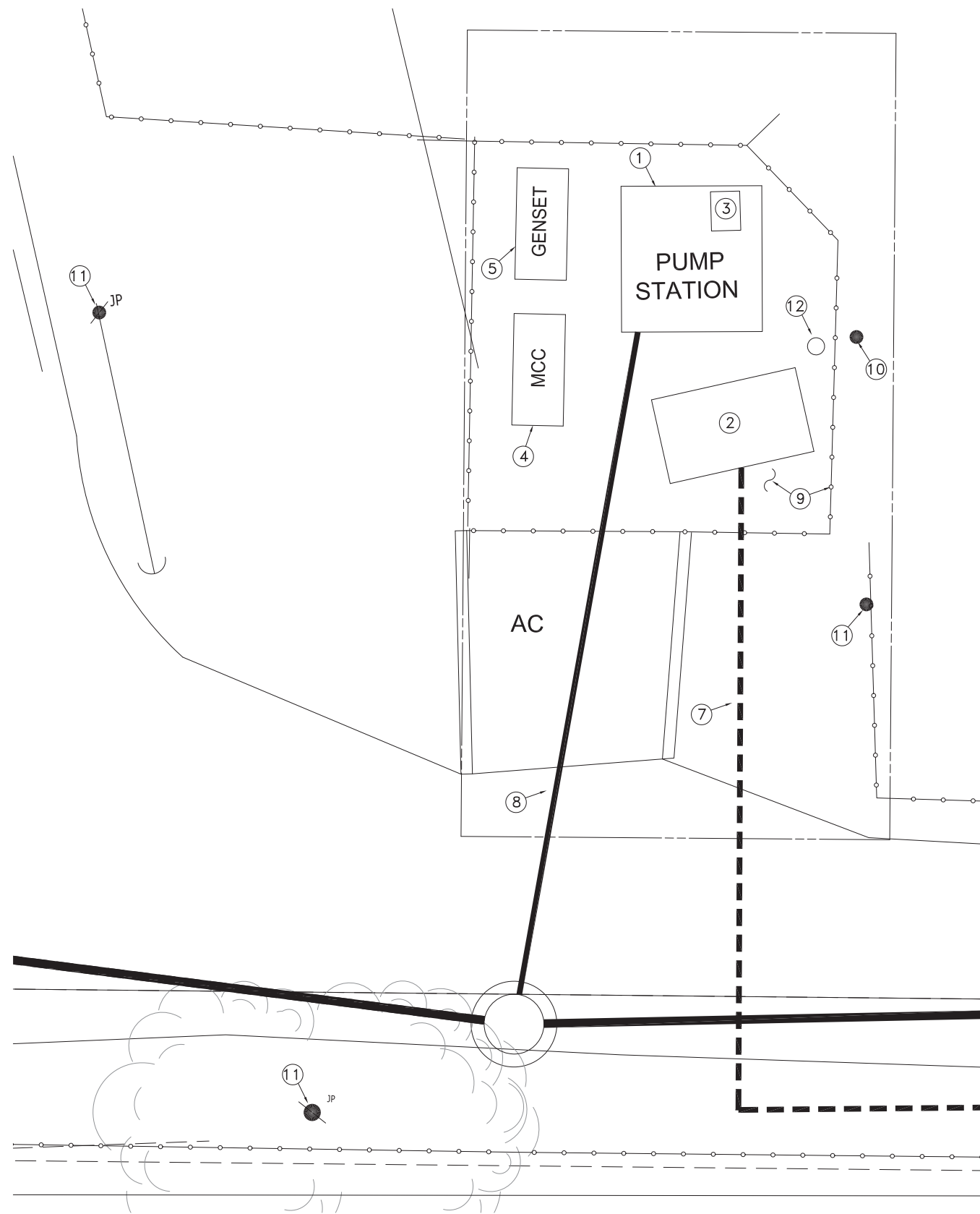
FREYER & LAURETA, INC.
 CIVIL ENGINEERS • SURVEYORS • CONSTRUCTION MANAGERS
 144 North San Mateo Drive • San Mateo, CA 94401
 (650)344-9901 • Fax (650)344-9920 • www.freyerlaureta.com

WEST BAY SANITARY DISTRICT
 SAN MATEO COUNTY
 PROJECT No. 1758.1



SAUSAL VISTA PUMP STATION PHASE II
COVER SHEET
PORTOLA VALLEY, CALIFORNIA

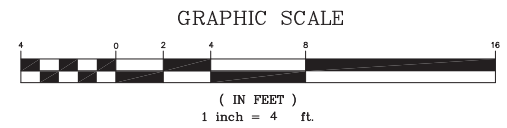
SHEET	1
JOB NO.	1067



CONTRACTOR NOTE:

GROUNDWATER WILL BE ENCOUNTERED DURING CONSTRUCTION. CONTRACTOR IS RESPONSIBLE FOR ALL DEWATERING AND PROPER DISPOSAL OF GROUNDWATER. THE DISTRICT WILL ALLOW FOR THE TEMPORARY DISCHARGE OF GROUNDWATER INTO THE SANITARY SEWER SYSTEM FOR TWO DAYS (48 HOURS) TO ALLOW FOR THE CONTRACTOR TO INSTALL A COFFERDAM OR OTHER MEANS TO CONSTRUCT THE WET WELL.

- NOTES:**
- ① REMOVE EXISTING WET WELL ENTIRELY (INCLUDING PUMPS, COVER, ETC.) AND EXCAVATE TO NECESSARY DEPTH TO FACILITATE NEW WET WELL CONSTRUCTION. EXISTING PUMPS SHALL BE PROPERLY DISPOSED.
 - ② REMOVE VALVE PIT ENTIRELY (INCLUDING ALL VALVES).
 - ③ REMOVE AND PROPERLY DISPOSE EXISTING FUEL TANK.
 - ④ REMOVE AND DELIVER TELEMETERY PANEL TO DISTRICT MAINTENANCE FACILITY ADJACENT TO BAYFRONT PARK IN MENLO PARK OR AS DIRECTED BY DISTRICT REPRESENTATIVE. REMAINING MCC TO BE PROPERLY DISPOSED.
 - ⑤ EXISTING GENERATOR SHALL BE REMOVED AND PROPERLY DISPOSED. CONTRACTOR SHALL TAKE NECESSARY PRECAUTIONS TO AVOID FUEL SPILL.
 - ⑥ CONTRACTOR SHALL REMOVE AND DISPOSE OF ALL CONDUIT AND WIRING.
 - ⑦ REMOVE EXISTING FORCE MAIN BETWEEN EXISTING VALVE PIT AND PROPERTY LINE.
 - ⑧ ABANDON EXISTING SS WHERE POSSIBLE. FILL WITH SAND/SLURRY AND PLUG BOTH ENDS WITH 12" CONCRETE. WHERE EXISTING SS IS ENCOUNTERED DURING INSTALLATION OF NEW GRAVITY SS, EXISTING PIPING SHALL BE REMOVED.
 - ⑨ REMOVE AND PROPERLY DISPOSE EXISTING CONCRETE SLAB AND CHAIN LINK FENCE.
 - ⑩ EXISTING TREE SHALL BE REMOVED.
 - ⑪ EXISTING POWER POLE SHALL BE PROTECTED IN PLACE.
 - ⑫ PROTECT IN PLACE EX. WATER LINE, EXTEND TO NEW HOSE BIB/BACKFLOW PREVENTER LOCATION.



DATE:	9/15/2015	9/15/15	ISSUED FOR BID
SCALE:	AS NOTED		
DESIGNED:	RJL		
DRAWN:	JJF		
CHECKED:	RJL		
PROJ. ENGR:	RJL		
BY	DATE	DESCRIPTION OF REVISIONS	APP'D

FREYER & LAURETA, INC.

CIVIL ENGINEERS • SURVEYORS • CONSTRUCTION MANAGERS
 144 North San Mateo Drive • San Mateo, CA 94401
 (650)344-9901 • Fax (650)344-9920 • www.freyerlaureta.com

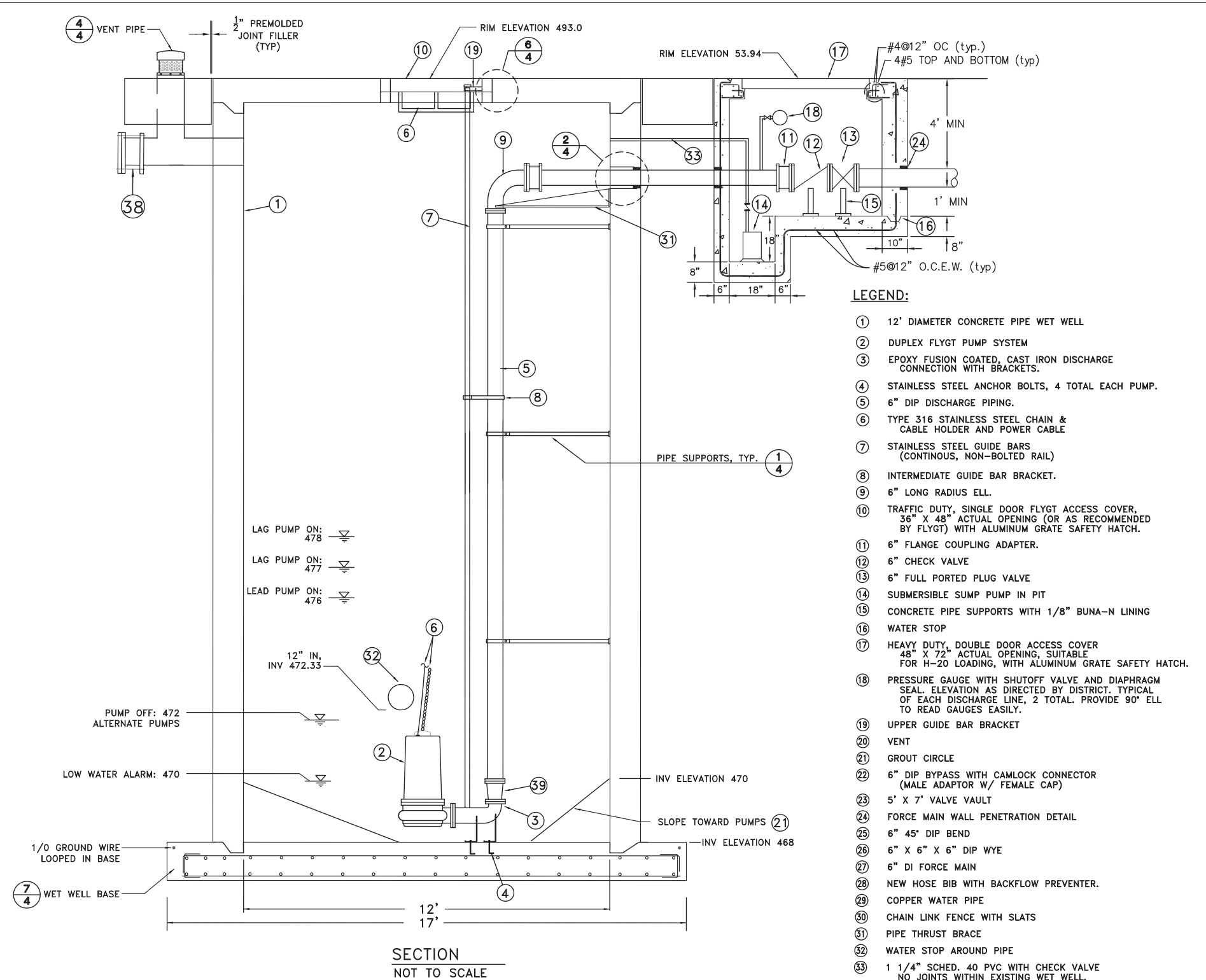
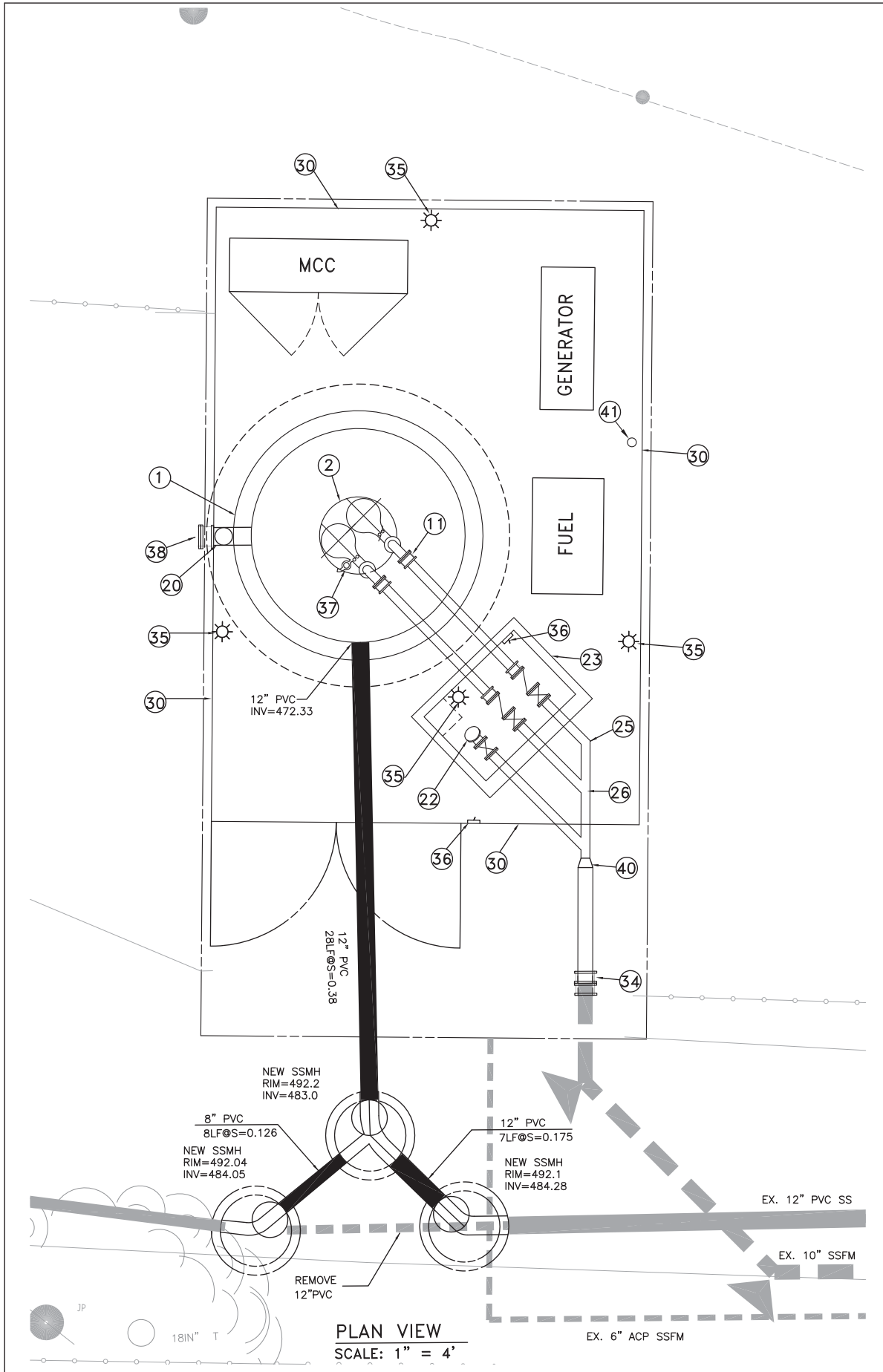
WEST BAY
 SANITARY DISTRICT
 SAN MATEO COUNTY

PROJECT No. 1758.1



SAUSAL VISTA PUMP STATION PHASE II
PUMP STATION DEMOLITION PLAN
PORTOLA VALLEY, CALIFORNIA

SHEET
 2
 JOB NO.
 1067



SANITARY SEWER PUMP STATION

1. Discharge piping from the wet well to the point of connection shall be ductile iron AWWA C151, Class 350, flanged, fusion bonded epoxy coated inside and outside. Provide insulating gaskets where ductile iron discharge piping is in contact with dissimilar metals. Provide stainless steel 316 nuts and bolts. Fittings shall be AWWA C110, with characteristics listed above. Buried pipe shall also be polyethylene encased in conformance with ANSI/AWWA A21.5/C105, "Polyethylene Encasement for Ductile Iron Piping for Water and Other Liquids."

2. Level sensors shall be ultrasonic with float backup for high level alarm and low level alarm, set to an elevation as directed by District representative.

GENERAL NOTES

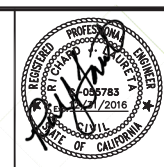
1. Excavations shall be adequately shored, braced and sheeted so that the earth will not slide or settle and so that all existing improvements of any kind will be fully protected from damage. Any damage resulting from a lack of adequate shoring, bracing, or sheeting shall be the responsibility of the contractor and he shall complete necessary repairs or reconstruction at his own expense. Where the excavation for a conduit trench is five (5) feet or more in depth, the contractor shall provide sheeting, shoring and bracing in conformance with the applicable construction safety orders of the Division of Industrial Safety of the State of California. The contractor shall comply with O.S.H.A. requirements at all times.

- LEGEND:**
- ① 12' DIAMETER CONCRETE PIPE WET WELL
 - ② DUPLEX FLYGT PUMP SYSTEM
 - ③ EPOXY FUSION COATED, CAST IRON DISCHARGE CONNECTION WITH BRACKETS.
 - ④ STAINLESS STEEL ANCHOR BOLTS, 4 TOTAL EACH PUMP.
 - ⑤ 6" DIP DISCHARGE PIPING.
 - ⑥ TYPE 316 STAINLESS STEEL CHAIN & CABLE HOLDER AND POWER CABLE
 - ⑦ STAINLESS STEEL GUIDE BARS (CONTINUOUS, NON-BOLTED RAIL)
 - ⑧ INTERMEDIATE GUIDE BAR BRACKET.
 - ⑨ 6" LONG RADIUS ELL.
 - ⑩ TRAFFIC DUTY, SINGLE DOOR FLYGT ACCESS COVER, 36" X 48" ACTUAL OPENING (OR AS RECOMMENDED BY FLYGT) WITH ALUMINUM GRATE SAFETY HATCH.
 - ⑪ 6" FLANGE COUPLING ADAPTER.
 - ⑫ 6" CHECK VALVE
 - ⑬ 6" FULL PORTED PLUG VALVE
 - ⑭ SUBMERSIBLE SUMP PUMP IN PIT
 - ⑮ CONCRETE PIPE SUPPORTS WITH 1/8" BUNA-N LINING
 - ⑯ WATER STOP
 - ⑰ HEAVY DUTY, DOUBLE DOOR ACCESS COVER 48" X 72" ACTUAL OPENING, SUITABLE FOR H-20 LOADING, WITH ALUMINUM GRATE SAFETY HATCH.
 - ⑱ PRESSURE GAUGE WITH SHUTOFF VALVE AND DIAPHRAGM SEAL. ELEVATION AS DIRECTED BY DISTRICT. TYPICAL OF EACH DISCHARGE LINE, 2 TOTAL. PROVIDE 90° ELL TO READ GAUGES EASILY.
 - ⑲ UPPER GUIDE BAR BRACKET
 - ⑳ VENT
 - ㉑ GROUT CIRCLE
 - ㉒ 6" DIP BYPASS WITH CAMLOCK CONNECTOR (MALE ADAPTOR W/ FEMALE CAP)
 - ㉓ 5' X 7' VALVE VAULT
 - ㉔ FORCE MAIN WALL PENETRATION DETAIL
 - ㉕ 6" 45° DIP BEND
 - ㉖ 6" X 6" X 6" DIP WYE
 - ㉗ 6" DI FORCE MAIN
 - ㉘ NEW HOSE BIB WITH BACKFLOW PREVENTER.
 - ㉙ COPPER WATER PIPE
 - ㉚ CHAIN LINK FENCE WITH SLATS
 - ㉛ PIPE THRUST BRACE
 - ㉜ WATER STOP AROUND PIPE
 - ㉝ 1 1/4" SCHED. 40 PVC WITH CHECK VALVE NO JOINTS WITHIN EXISTING WET WELL.
 - ㉞ FLANGED ADAPTERS
 - ㉟ LIGHT
 - ㊱ LIGHT SWITCH
 - ㊲ FLUSH VALVE TO FIT FLYGT PUMP SYSTEM
 - ㊳ FLANGED ADAPTOR/BLIND FLANGE
 - ㊴ 4"X6" REDUCER
 - ㊵ 6" X 10" ADAPTOR
 - ㊶ NEW HOSE BIB WITH BACKFLOW PREVENTER

DATE:	9/15/2015	9/15/15	ISSUED FOR BID
SCALE:	AS NOTED		
DESIGNED:	RJL		
DRAWN:	JJF		
CHECKED:	RJL		
PROJ. ENGR:	RJL		
BY	DATE	DESCRIPTION OF REVISIONS	APP'D

FREYER & LAURETA, INC.
CIVIL ENGINEERS • SURVEYORS • CONSTRUCTION MANAGERS
144 North San Mateo Drive • San Mateo, CA 94401
(650)344-9901 • Fax (650)344-9920 • www.freyerlaureta.com

WEST BAY
SANITARY DISTRICT
SAN MATEO COUNTY
PROJECT No. 1758.1



SAUSAL VISTA PUMP STATION PHASE II
PUMP STATION IMPROVEMENT
PLAN AND SECTION
PORTOLA VALLEY, CALIFORNIA

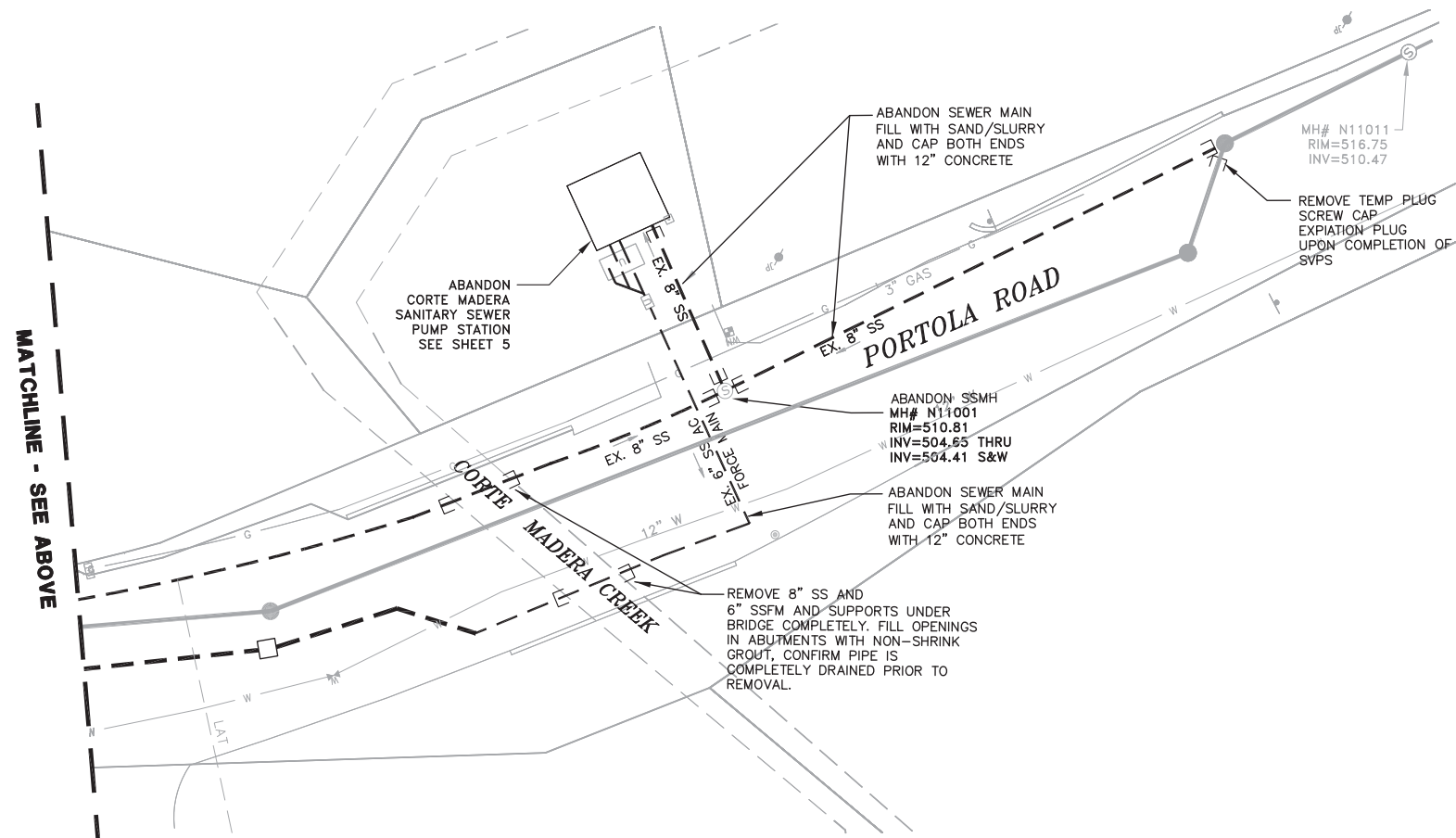
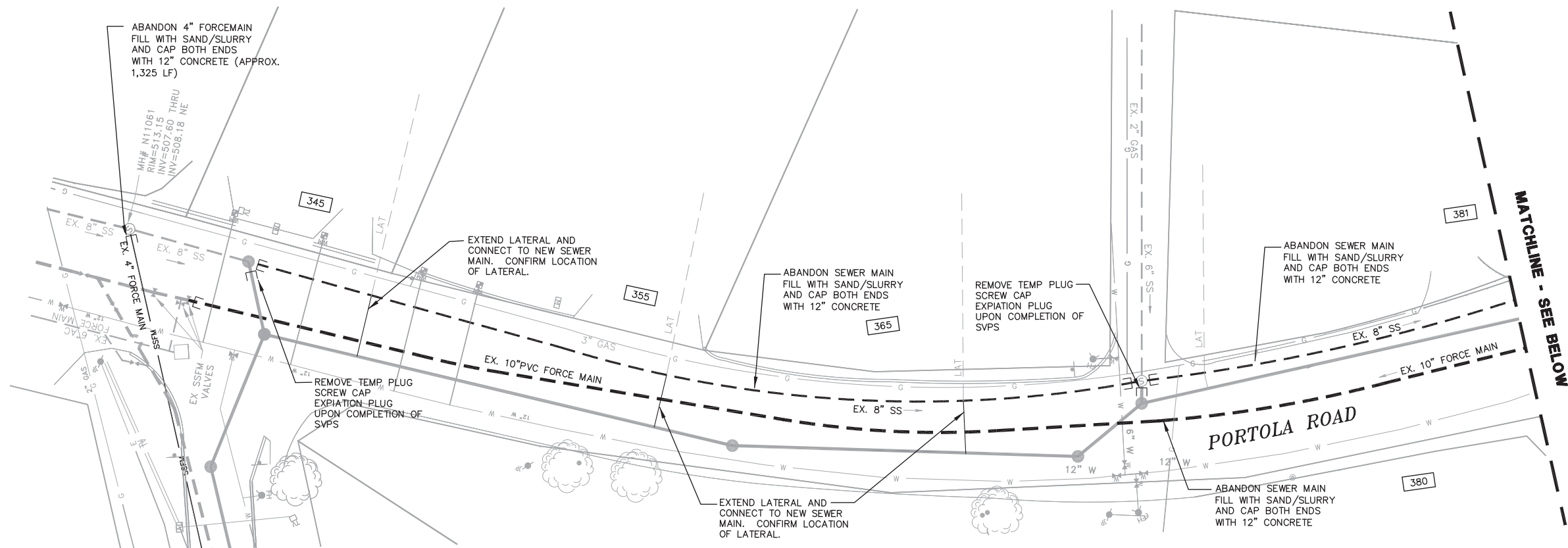
SHEET	3
JOB NO.	1067



GRAPHIC SCALE



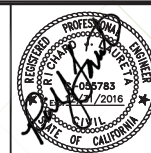
(IN FEET)
1 inch = 20 ft.



DATE:	9/15/2015	9/15/15	ISSUED FOR BID
SCALE:	AS NOTED		
DESIGNED:	RJL		
DRAWN:	JJF		
CHECKED:	RJL		
PROJ. ENGR:	RJL		
BY	DATE	DESCRIPTION OF REVISIONS	APP'D

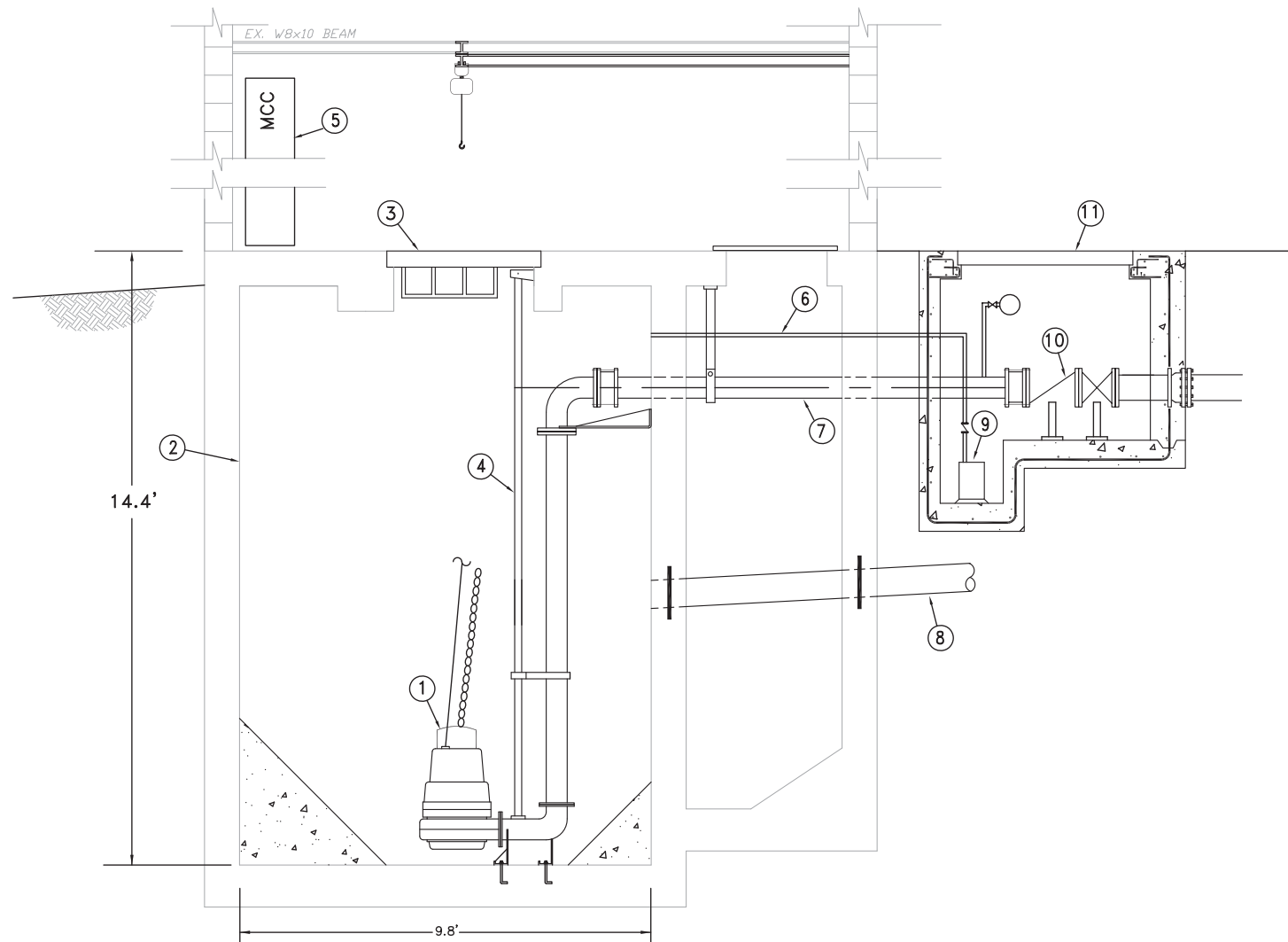
FREYER & LAURETA, INC.
 CIVIL ENGINEERS • SURVEYORS • CONSTRUCTION MANAGERS
 144 North San Mateo Drive • San Mateo, CA 94401
 (650)344-9901 • Fax (650)344-9920 • www.freyerlaureta.com

WEST BAY
 SANITARY DISTRICT
 SAN MATEO COUNTY
 PROJECT No. 1758.1

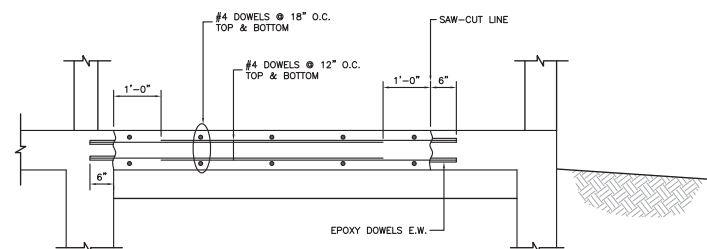


SAUSAL VISTA PUMP STATION PHASE II
PORTOLA ROAD AND GEORGIA LANE
PIPING DEMOLITION PLAN
PORTOLA VALLEY, CALIFORNIA

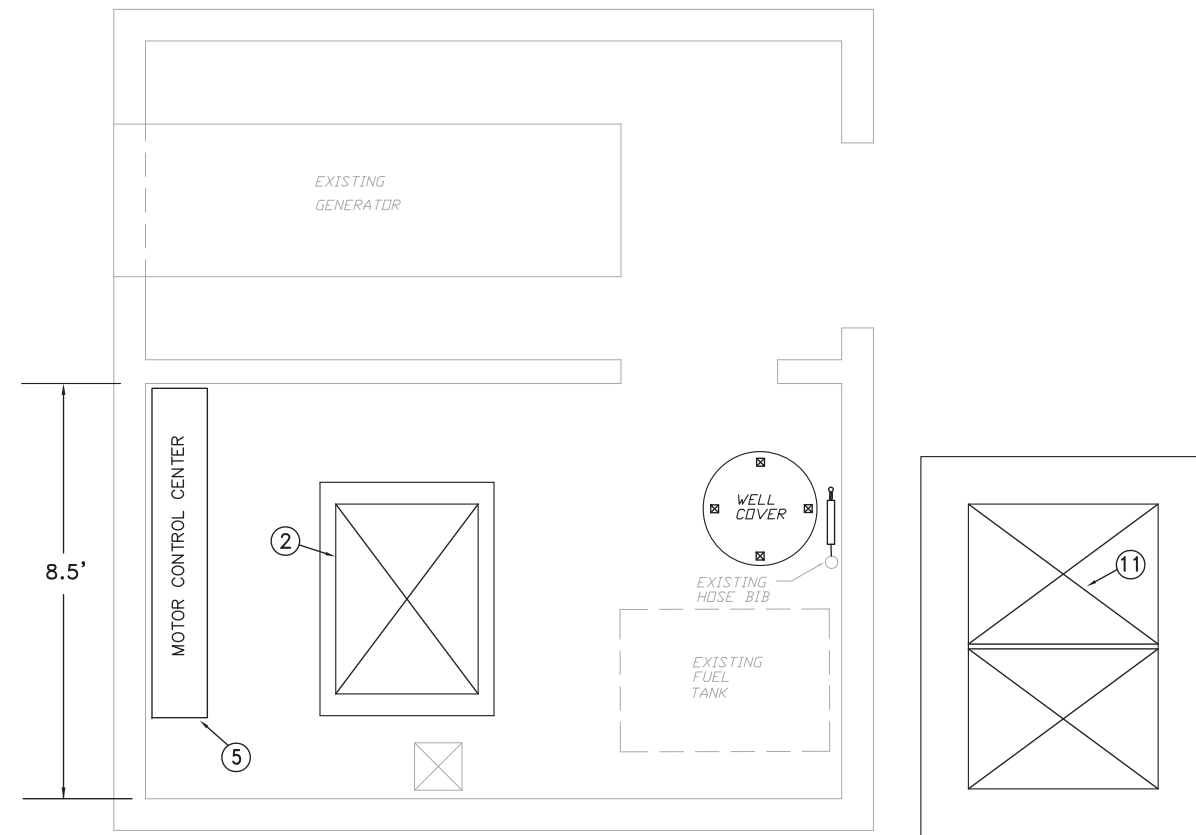
SHEET
 4
 JOB NO.
 1067



SECTION A



CONCRETE DECK



PLAN

NOTES:

- ① REMOVE PUMPS AND DELIVER TO THE DISTRICT MAINTENANCE FACILITY NEAR BAYFRONT PARK IN MENLO PARK OR AS DIRECTED BY DISTRICT.
- ② CLEAN WET WELL AND FILL WITH CELLCRETE (30pcf) TO 10" BELOW DECK ELEVATION.
- ③ REMOVE 36"x48" WET WELL COVER AND GRATE. SEAL WITH CONCRETE DECKING AFTER PLACEMENT OF SLURRY.
- ④ REMOVE ALL PIPING, SUPPORTS, BRACKETS, RAILS WITHIN WET WELL.
- ⑤ REMOVE AND PROPERLY DISPOSE OF MOTOR CONTROL CENTER. FILL ALL FLOOR PENETRATIONS UNDER THE MCC.
- ⑥ REMOVE SUMP PUMP PIPING.
- ⑦ REMOVE 6" DUCTILE IRON FORCEMAIN.
- ⑧ CAP 8" GRAVITY MAIN LINE WITH 12" CONCRETE PLUG.
- ⑨ REMOVE SUMP PUMP AND RETURN TO THE DISTRICT.
- ⑩ REMOVE ALL PIPING, VALVES, GAUGES WITHIN THE VALVE PIT.
- ⑪ DEMOLISH THE TOP 18" OF 5'x7" VALVE VAULT, FILL VALVE PIT AND VOID UP TO 6" BELOW GRADE WITH CELLCRETE (30pcf), PLACE 6" OF AC OVER SLURRY.

DATE:	9/15/2015	9/15/15	ISSUED FOR BID
SCALE:	AS NOTED		
DESIGNED:	RJL		
DRAWN:	JJF		
CHECKED:	RJL		
PROJ. ENGR:	RJL		
BY	DATE	DESCRIPTION OF REVISIONS	APP'D

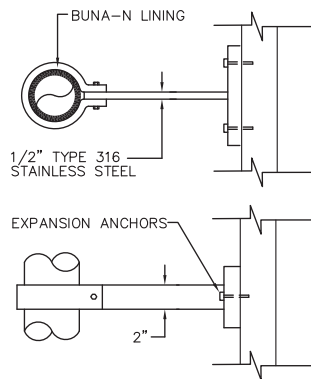
FREYER & LAURETA, INC.
 CIVIL ENGINEERS • SURVEYORS • CONSTRUCTION MANAGERS
 144 North San Mateo Drive • San Mateo, CA 94401
 (650)344-9901 • Fax (650)344-9920 • www.freyerlaureta.com

WEST BAY
 SANITARY DISTRICT
 SAN MATEO COUNTY
 PROJECT No. 1758.1

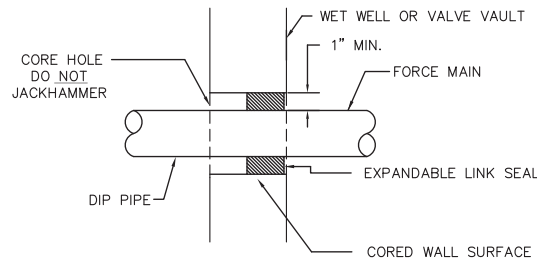


SAUSAL VISTA PUMP STATION PHASE II
DETAIL SHEET
 PORTOLA VALLEY, CALIFORNIA

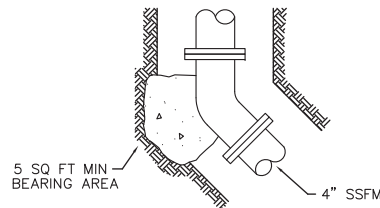
SHEET
 5
 JOB NO.
 1067



1
6 PIPE SUPPORT (TYP.)
NOT TO SCALE

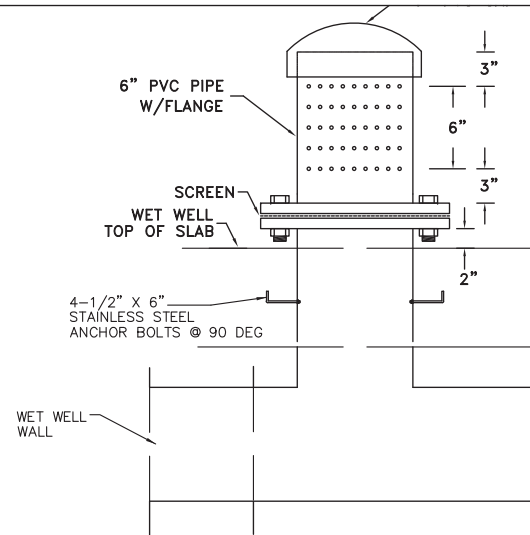


2
6 FORCEMAIN WALL PENETRATION DETAIL (TYP.)
NOT TO SCALE

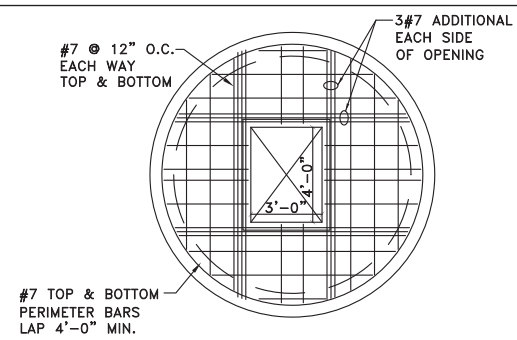


NOTES:
CONCRETE SHALL BE CLASS B.

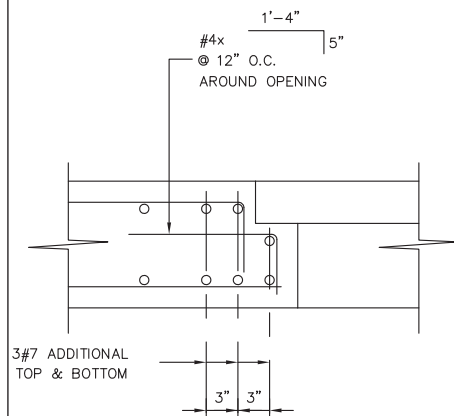
3
6 THRUST BLOCK DETAIL
NOT TO SCALE



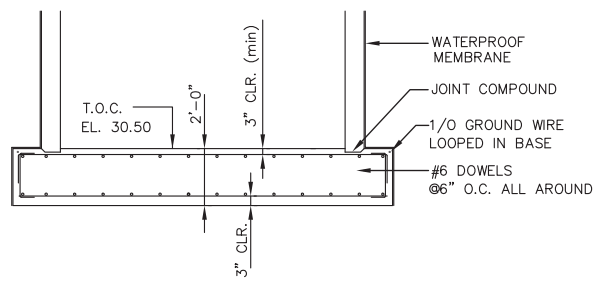
4
6 VENT DETAIL
NOT TO SCALE



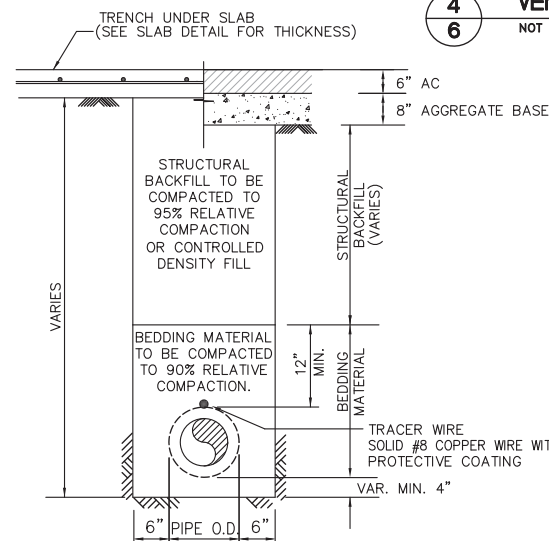
5
6 WET WELL TOP REINFORCEMENT
NOT TO SCALE



6
6 REBAR PLACEMENT (TYP.)
NOT TO SCALE



7
6 WET WELL BASE (TYP.)
NOT TO SCALE



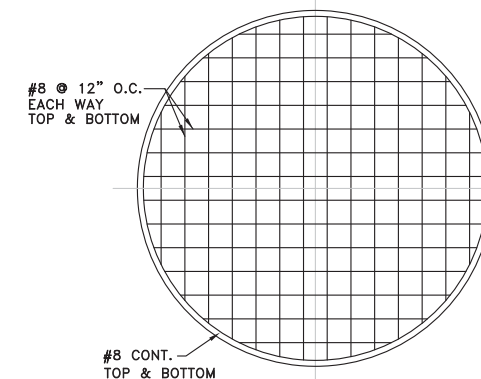
8
6 STANDARD TRENCH DETAIL
NOT TO SCALE

BEDDING MATERIAL
GRANULAR BEDDING MATERIAL REQUIREMENTS (ASTM D448 SIZE #67)

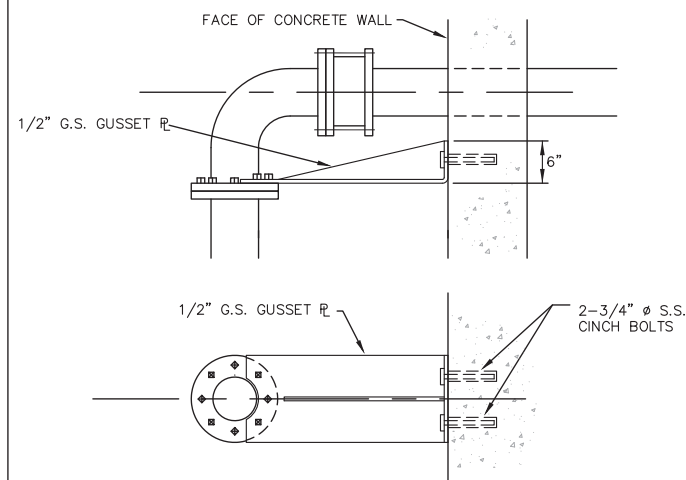
SIEVE SIZES	PERCENTAGE PASSING
1"	100
3/4"	90-100
3/8"	20-55
#4	0-10
#8	0-5

STRUCTURAL BACKFILL
STRUCTURAL BACKFILL REQUIREMENTS PERCENT PASSING (CAL TRANS CALIFORNIA TEST 202) MINIMUM SAND EQUIVALENT NOT LESS THAN 20

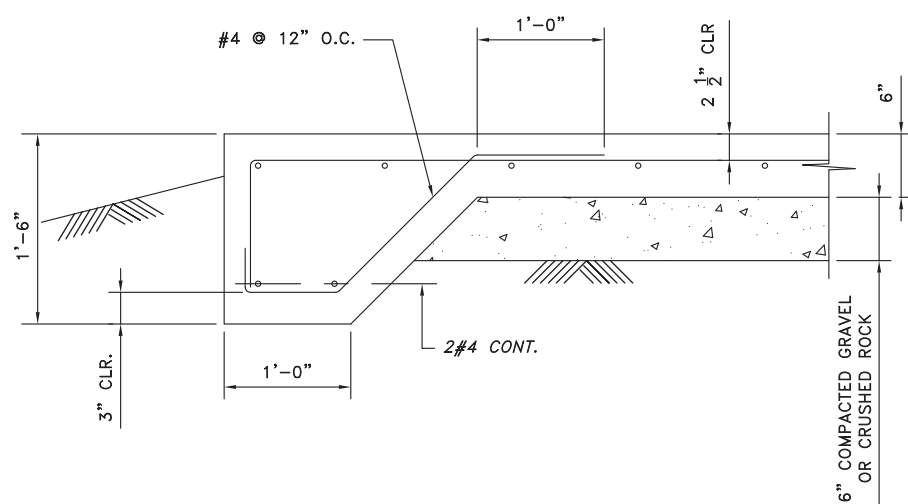
SIEVE SIZES	PERCENTAGE PASSING
3"	100
#4	35-100
#50	20-100



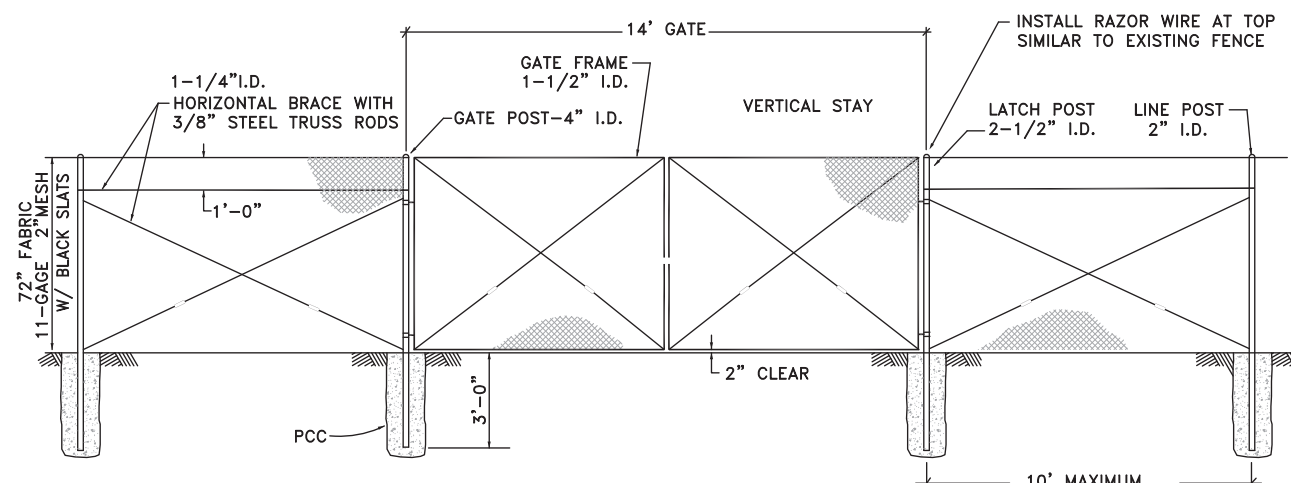
9
6 WET WELL BASE REINFORCEMENT
NOT TO SCALE



10
6 PIPE THRUST BRACE
NOT TO SCALE



11
6 EDGE OF SLAB DETAIL (TYP.)
NOT TO SCALE



12
6 GALVANIZED CHAIN LINK FENCE
MATERIALS AND ASSEMBLY PER CALTRANS SECTION 80-4

DATE:	9/15/2015	9/15/15	ISSUED FOR BID	
SCALE:	AS NOTED			
DESIGNED:	RJL			
DRAWN:	JJF			
CHECKED:	RJL			
PROJ. ENGR:	RJL			
BY	DATE	DESCRIPTION OF REVISIONS		APP'D

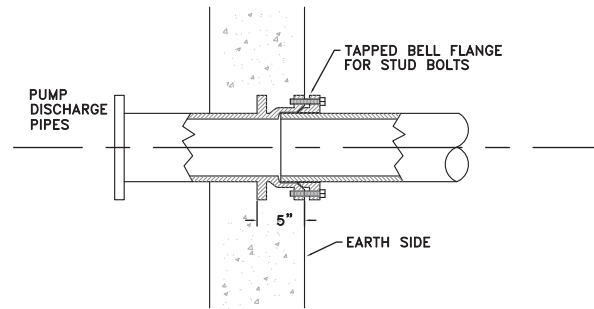
FREYER & LAURETA, INC.
CIVIL ENGINEERS • SURVEYORS • CONSTRUCTION MANAGERS
144 North San Mateo Drive • San Mateo, CA 94401
(650)344-9901 • Fax (650)344-9920 • www.freyerlaureta.com

WEST BAY
SANITARY DISTRICT
SAN MATEO COUNTY
PROJECT No. 1758.1

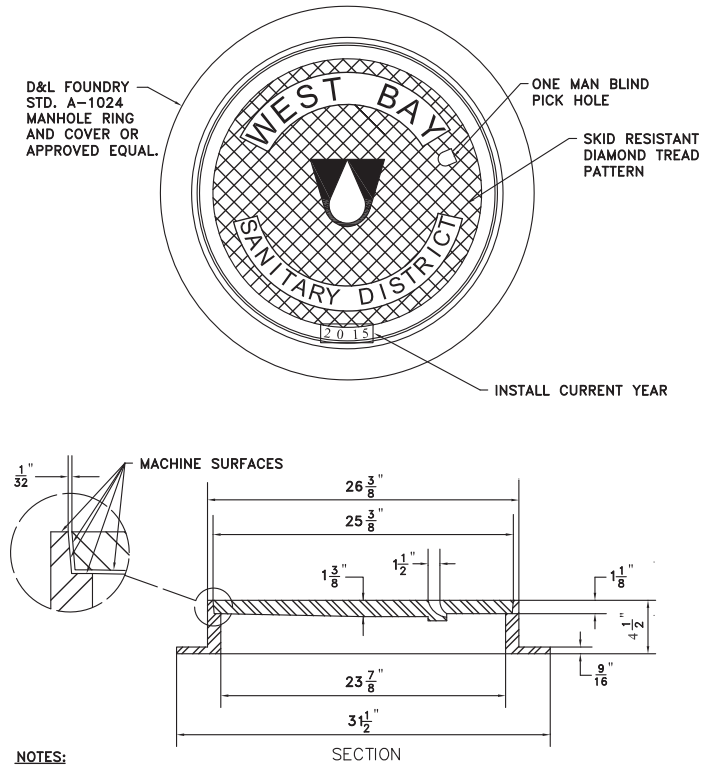


SAUSAL VISTA PUMP STATION PHASE II
DETAIL SHEET
PORTOLA VALLEY, CALIFORNIA

SHEET
6
JOB NO.
1067

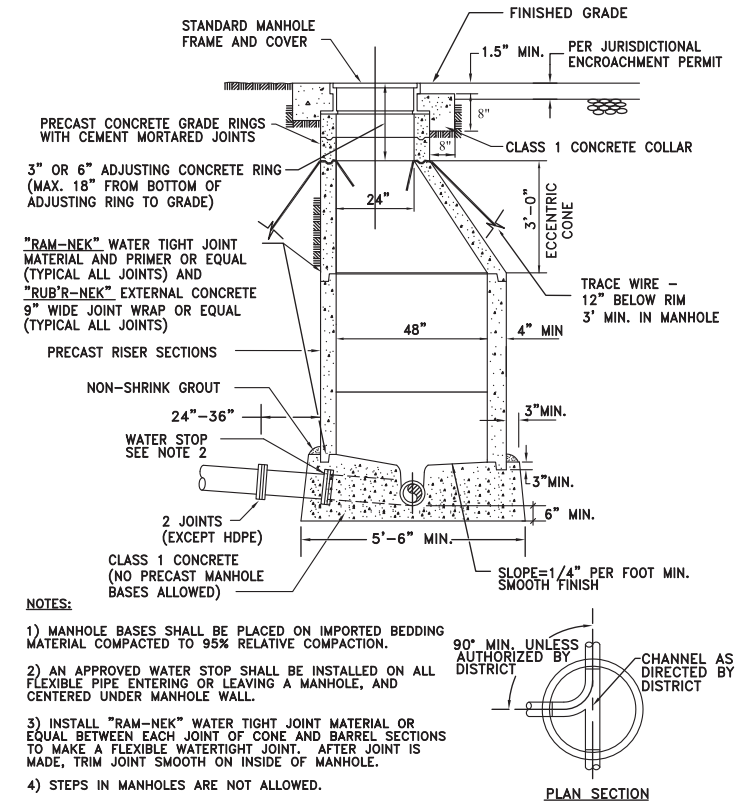


1
7 WALL PIPE DETAIL (THROUGH 10" VALVE PIT WALL)
NOT TO SCALE



- NOTES:**
- 1) CAST IRON FOR FRAME AND COVER SHALL BE CLASS 30 MINIMUM PER ASTM A-48.
 - 2) COVERS SHALL BE H-20, FULL VEHICULAR TRAFFIC LOADING, RATED AND SHALL NOT EXCEED 145 POUNDS IN WEIGHT.
 - 3) THE FRAME AND COVER SHALL BE PAINTED OR DIPPED IN ASPHALT PRIOR TO LEAVING FOUNDRY.

2
7 WALL PIPE DETAIL (THROUGH 10" VALVE PIT WALL)
NOT TO SCALE



- NOTES:**
- 1) MANHOLE BASES SHALL BE PLACED ON IMPORTED BEDDING MATERIAL COMPACTED TO 95% RELATIVE COMPACTION.
 - 2) AN APPROVED WATER STOP SHALL BE INSTALLED ON ALL FLEXIBLE PIPE ENTERING OR LEAVING A MANHOLE, AND CENTERED UNDER MANHOLE WALL.
 - 3) INSTALL "RAM-NEK" WATER TIGHT JOINT MATERIAL OR EQUAL BETWEEN EACH JOINT OF CONE AND BARREL SECTIONS TO MAKE A FLEXIBLE WATERTIGHT JOINT. AFTER JOINT IS MADE, TRIM JOINT SMOOTH ON INSIDE OF MANHOLE.
 - 4) STEPS IN MANHOLES ARE NOT ALLOWED.
 - 5) TRACE WIRE SHALL BE SOLID AND COATED 8 GAUGE COPPER WIRE PLACED 12" BELOW RIM WITH 3' COILED UP IN MANHOLE.
 - 6) MANHOLES SHALL BE VACUUM TESTED.
 - 7) ECCENTRIC CONE SHALL BE POSITIONED IN SUCH A MANNER OVER CENTER OF PIPE FOR INSTALLATION OF FLOW METER SENSOR BRACKET.
 - 8) CONCRETE PLATFORMS MAY BE REQUIRED ON A CASE BY CASE BASIS.

3
7 WALL PIPE DETAIL (THROUGH 10" VALVE PIT WALL)
NOT TO SCALE

DATE:	9/15/2015	9/15/15	ISSUED FOR BID	
SCALE:	AS NOTED			
DESIGNED:	RJL			
DRAWN:	JJF			
CHECKED:	RJL			
PROJ. ENGR:	RJL			
BY	DATE	DESCRIPTION OF REVISIONS	APP'D	

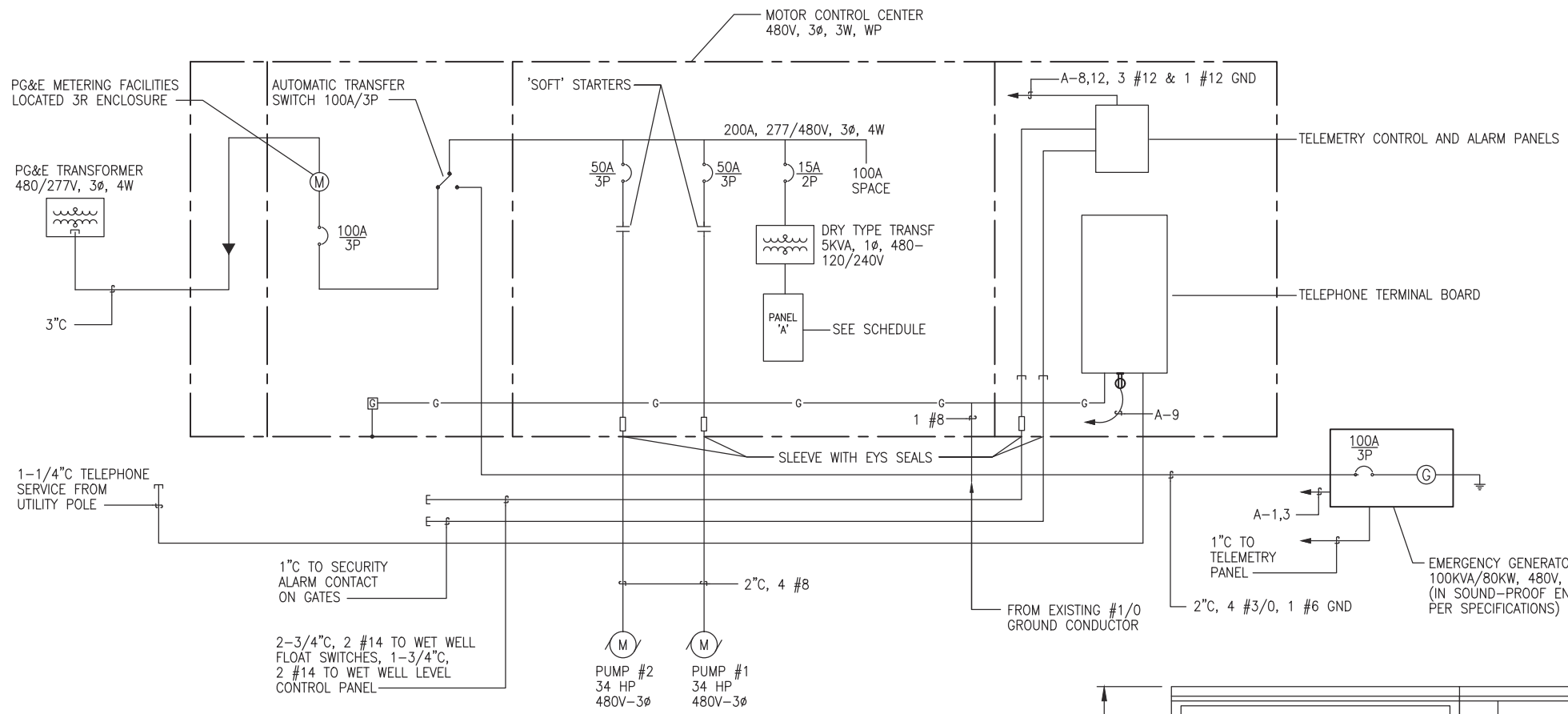
FREYER & LAURETA, INC.
CIVIL ENGINEERS • SURVEYORS • CONSTRUCTION MANAGERS
144 North San Mateo Drive • San Mateo, CA 94401
(650)344-9901 • Fax (650)344-9920 • www.freyerlaureta.com

WEST BAY
SANITARY DISTRICT
SAN MATEO COUNTY
PROJECT No. 1758.1



SAUSAL VISTA PUMP STATION PHASE II
DETAIL SHEET
PORTOLA VALLEY, CALIFORNIA

SHEET
7
JOB NO.
1067



1 SINGLE LINE DIAGRAM
SCALE: N.A.

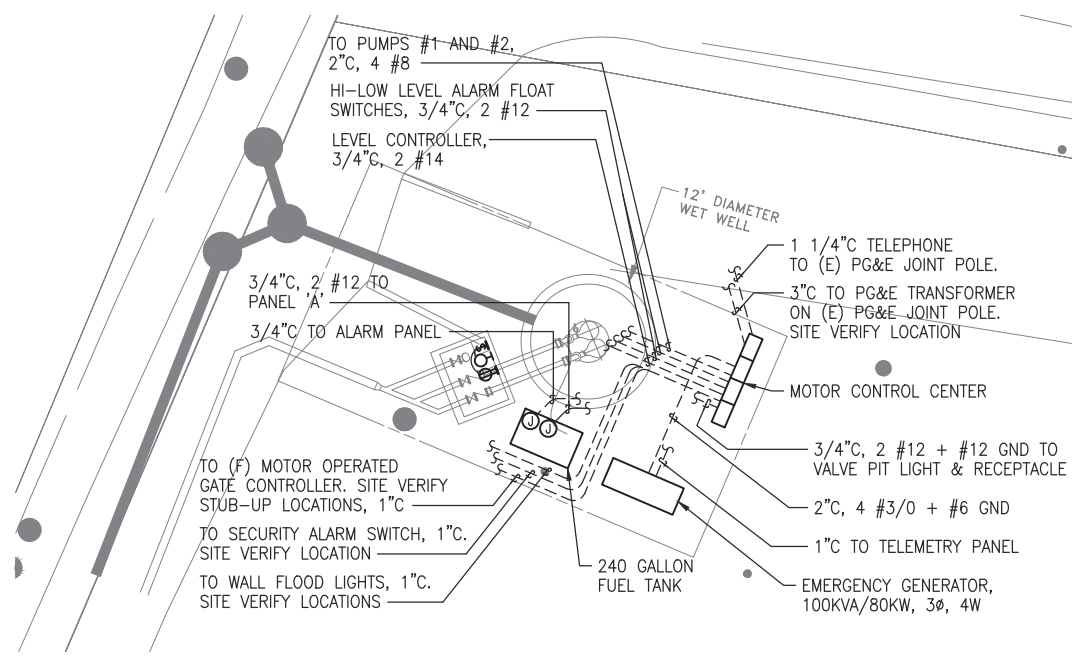
PANEL SCHEDULE: A 120/240 VOLTS, 1 PHASE, 3 WIRE KAIC RATING:

MAIN BREAKER REQ'D: 30A MAIN LUGS ONLY: BUS RATING: 100 AMPS PANEL TYPE: BOLT-ON LOCATION: MCC

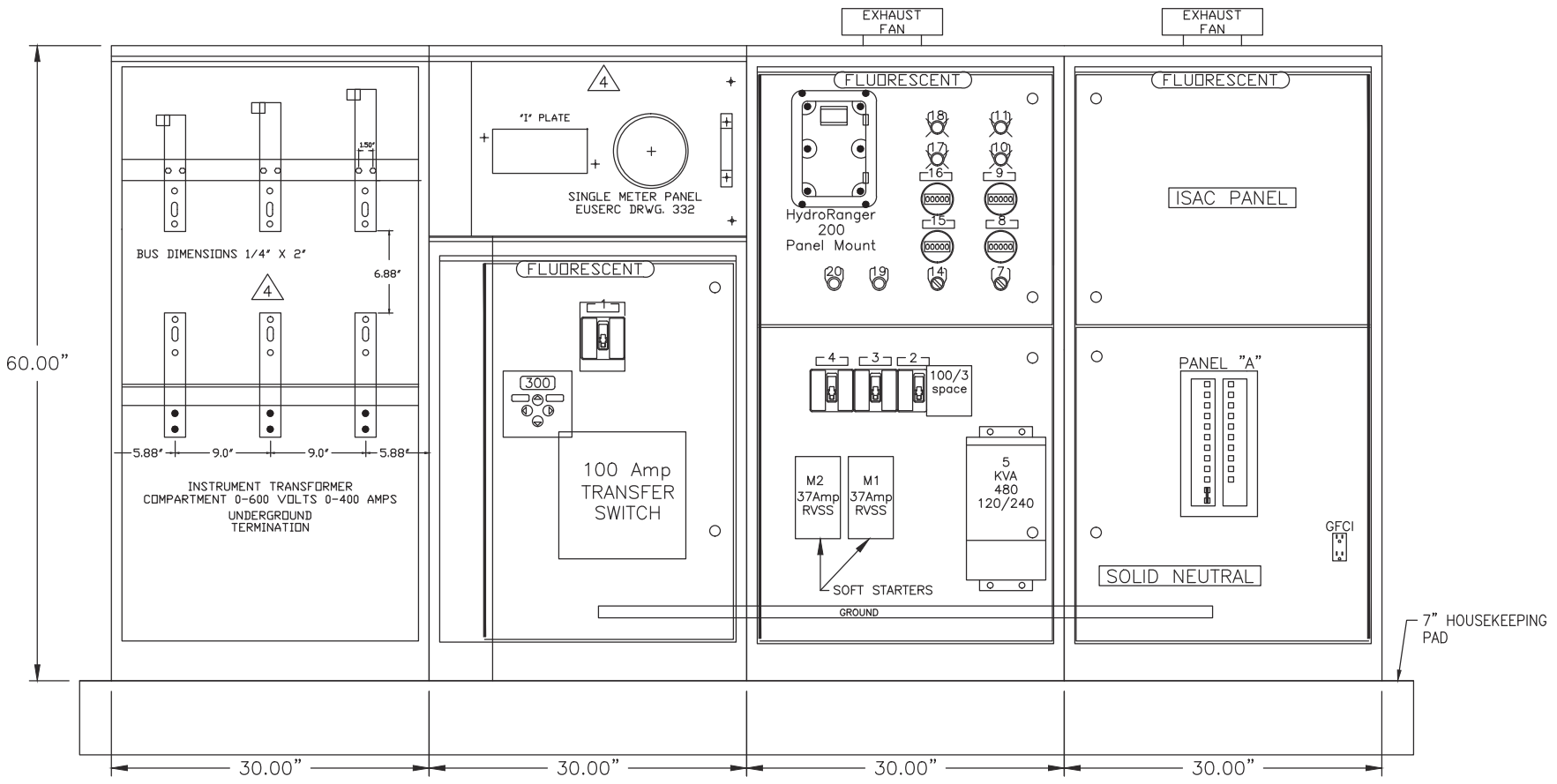
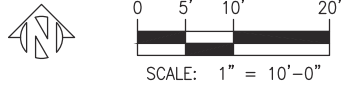
DESCRIPTION	PHASE A	PHASE B	AMPS	POLE	CKT	CKT	POLE	AMPS	PHASE A	PHASE B	DESCRIPTION
BATTERY CHARGER	200		20	1	1	X	1	20	600		AREA LIGHTING
JACKET WATER HEATER		1000	20	1	3	X	1	20	400		AREA RECEPTACLES
PANEL RECEPTACLE	200		20	1	5	X	1	20	300		ENCL FAN AND LIGHT
PANEL SPACE HEATER		400	20	1	7	X	1	20			TELEMETRY
FUEL TANK			20	1	9	X	1	20	100		ALARM PANEL
SPARE			20	1	11	X	1	20			ULTRASONIC PANEL
SPARE			20	1	13	X	1	20			SPARE
SPARE			20	1	15	X	1	20			SPACE
SPARE			20	1	17	X	1	20			SPACE
SPARE			20	1	19	X	1	20			SPACE
SPARE			20	1	21	X	1	20			SPACE
SPARE			20	1	23	X	1	20			SPACE
TOTALS	900	1400							1000	500	TOTALS

TOTAL CONNECTED LOAD: 3,800 VA
LONG TIME CONTINUOUS LOAD: 600 X 0.25 = 150 VA
CALCULATED FEEDER LOAD: 3,950 VA (16.5A)

2 PANEL SCHEDULE 'A'
SCALE: N.A.



4 ELECTRICAL SITE PLAN
SCALE: 1" = 100'-0"



3 MCC ELEVATION
SCALE: 1/8" = 1"

DATE:	9/15/2015	9/15/15	ISSUED FOR BID
SCALE:	AS NOTED		
DESIGNED:	OTL		
DRAWN:	STA		
CHECKED:	OTL		
PROJ. ENGR:	OTL		
BY	DATE	DESCRIPTION OF REVISIONS	APP'D

FREYER & LAURETA, INC.
ELECTRICAL CONSULTANTS
144 North San Mateo Drive • San Mateo, CA 94401
TEL (510) 452-9391
FAX (510) 452-0661

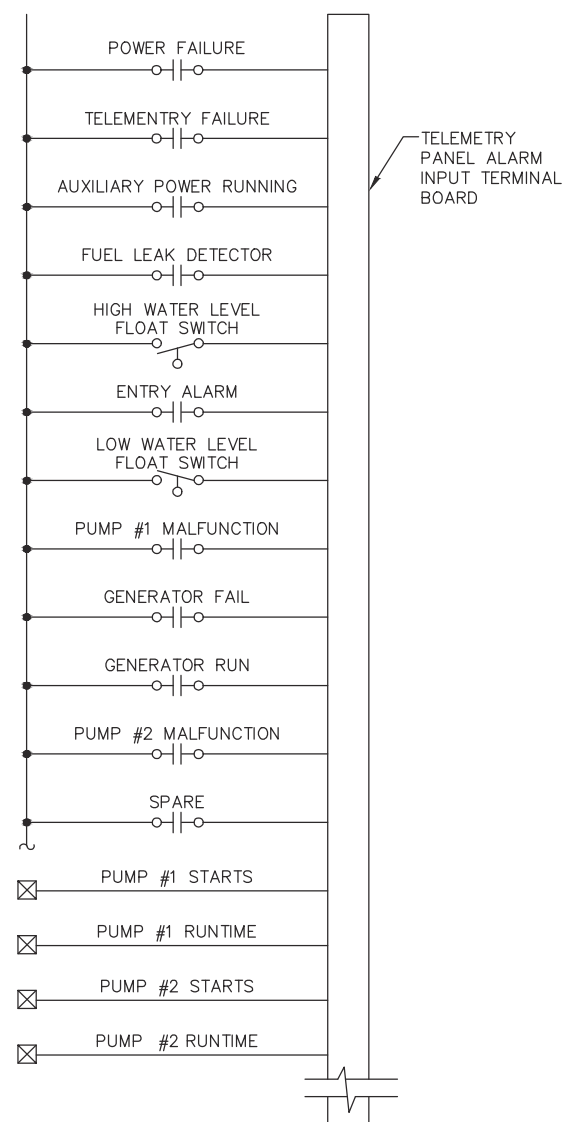
ZEIGER ENGINEERS, INC.
ELECTRICAL CONSULTANTS
478 3RD STREET
OAKLAND, CA 94607
TEL (510) 452-9391
FAX (510) 452-0661

WEST BAY
SANITARY DISTRICT
SAN MATEO COUNTY
PROJECT No. 1758.1

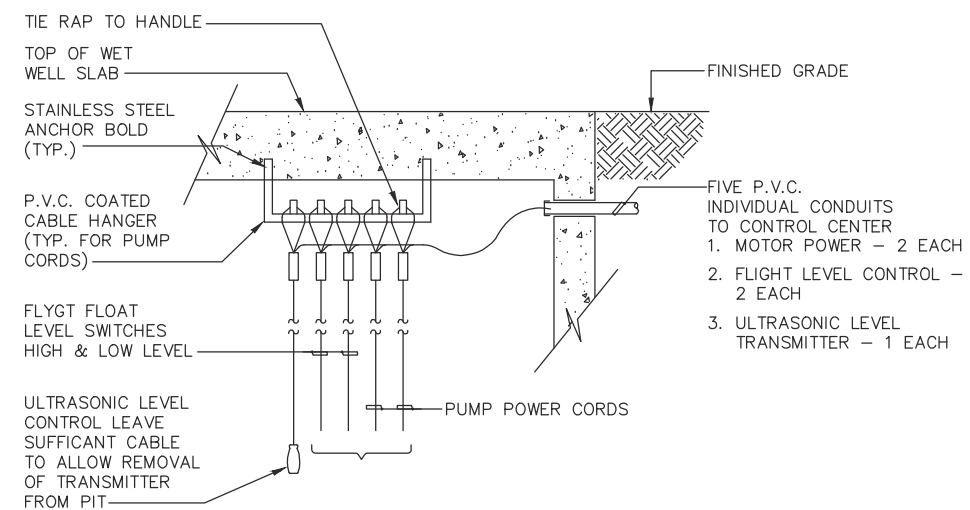
REGISTERED PROFESSIONAL ENGINEER
Cesar Tuno Lopez
NO. E9642
EXP. 9/30/16
Electrical
STATE OF CALIFORNIA

SAUSAL VISTA PUMP STATION PHASE ii
ELECTRICAL PLAN
PORTOLA VALLEY, CALIFORNIA

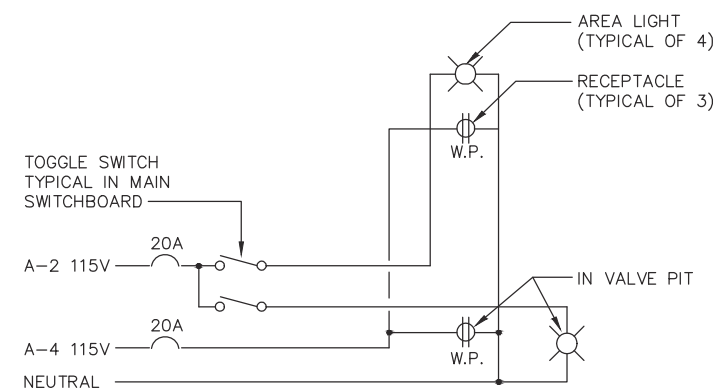
SHEET
E1
JOB NO.
3851



2 ALARM INPUT TERM. /BOARD DIAGRAM
SCALE: NONE



3 TYPICAL SECTION
SCALE: NONE



1 AREA LIGHTING DIAGRAM
SCALE: NONE

DATE:	12/16/2014			
SCALE:	AS NOTED			
DESIGNED:	OTL			
DRAWN:	STA			
CHECKED:	OTL			
PROJ. ENGR:	OTL			
BY	DATE	DESCRIPTION OF REVISIONS	APP'D	

FREYER & LAURETA, INC.
 CIVIL ENGINEERS • SURVEYORS • CONSTRUCTION MANAGERS
 144 North San Mateo Drive • San Mateo, CA 94401
 (650)344-9801 • Fax (650)344-9920 • www.freyerlaureta.com

ZEIGER ENGINEERS INC.
 ELECTRICAL CONSULTANTS
 478 3RD STREET
 OAKLAND, CA 94607
 TEL (510) 452-9391
 FAX (510) 452-0661

WEST BAY
 SANITARY DISTRICT
 SAN MATEO COUNTY

REGISTERED PROFESSIONAL ENGINEER
 Cesar Tuno Lopez
 NO. E9642
 EXP. 9/30/16
 Electrical
 STATE OF CALIFORNIA

SAUSAL VISTA PUMP STATION REPLACEMENT PROJECT
 ELECTRICAL DETAILS

E2
 JOB NO.
3851