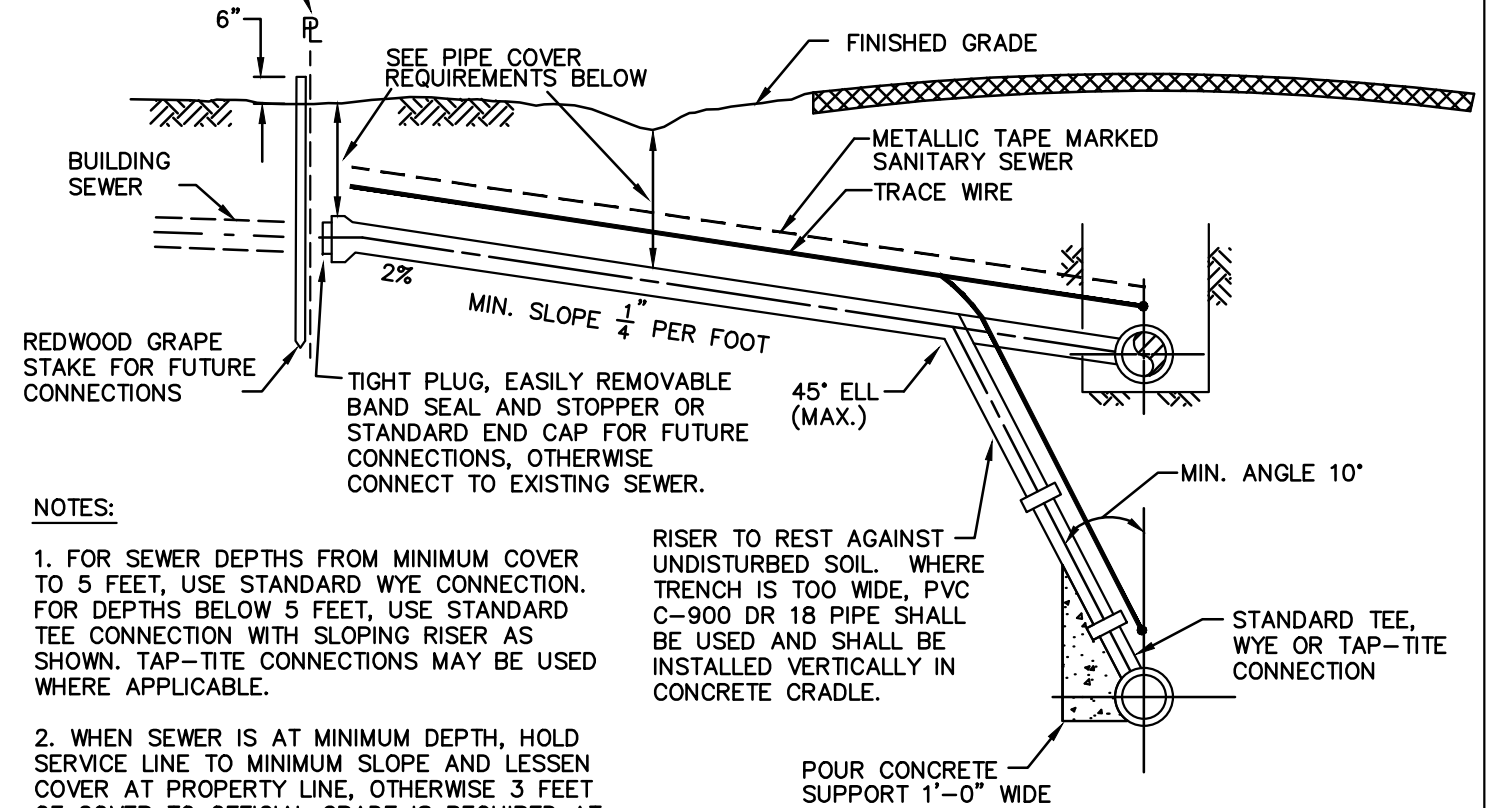


INSTALL WYE C/O AT OR WITHIN FIVE FEET OF PROPERTY LINE



NOTES:

1. FOR SEWER DEPTHS FROM MINIMUM COVER TO 5 FEET, USE STANDARD WYE CONNECTION. FOR DEPTHS BELOW 5 FEET, USE STANDARD TEE CONNECTION WITH SLOPING RISER AS SHOWN. TAP-TITE CONNECTIONS MAY BE USED WHERE APPLICABLE.

2. WHEN SEWER IS AT MINIMUM DEPTH, HOLD SERVICE LINE TO MINIMUM SLOPE AND LESSEN COVER AT PROPERTY LINE, OTHERWISE 3 FEET OF COVER TO OFFICIAL GRADE IS REQUIRED AT PROPERTY LINE.

3. THE LOCATION OF ALL SEWER LATERALS SHALL BE MARKED WITH A LETTER "S" ON TOP OF CURB OR BACK OF WALK.

4. ALL SERVICE TEES OR WYES SHALL BE MANUFACTURER'S STANDARD FITTINGS. CONNECTION CLOSURE SHALL BE BY STANDARD BAND SEAL COUPLINGS WITH 316 STAINLESS STEEL SHEAR RING ON SERVICE ADDITIONS. NO PIPE BREAKING AND CONCRETE PATCHING WILL BE PERMITTED, ONLY NEATLY SNAPPED OR SAWCUT LENGTHS WILL BE ALLOWED.

5. 8 GAUGE COPPER WIRE OR COATED COPPER WIRE FOR TRACING PURPOSES SHALL BE PLACED ON ALL NEW LATERALS AND REPLACEMENT LATERALS WHEN EXCAVATION IS FROM MAIN LINE TO THE PROPERTY LINE CLEANOUT. WIRE TO BE BROUGHT TO RISER WITH TWO FEET COILED INSIDE BOX.

6. TAP-TITE AND TEE CONNECTIONS ARE NOT ALLOWED IN TERMINATING SEWER MAINS (MOST UPSTREAM LINE).

7. CONTRACTOR SHALL PLACE ROOT CONTROL FABRIC OVER ALL JOINTS AS SHOWN ON WEST BAY SANITARY DISTRICT DETAIL NO. 13.

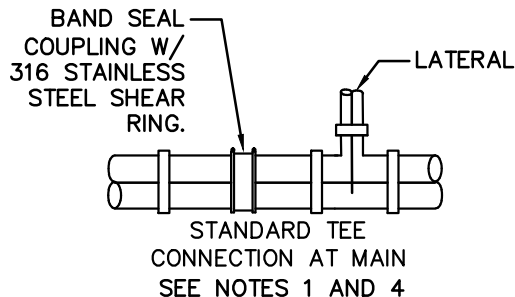
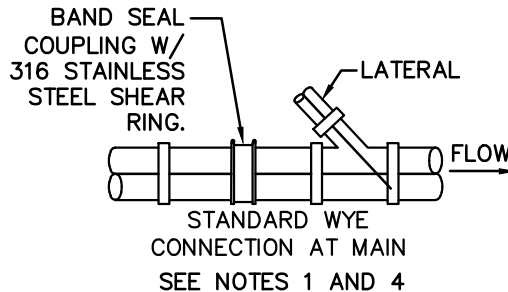
8. CONTRACTOR SHALL INSTALL BEDDING AND BACKFILL MATERIAL AS SHOWN ON WEST BAY SANITARY DISTRICT DETAIL NO. 8.

9. PIPE MATERIAL FOR LATERALS SHALL BE DIP CLASS 50 OR 51, OR PVC C900 DR18.

RISER TO REST AGAINST UNDISTURBED SOIL. WHERE TRENCH IS TOO WIDE, PVC C-900 DR 18 PIPE SHALL BE USED AND SHALL BE INSTALLED VERTICALLY IN CONCRETE CRADLE.

POUR CONCRETE SUPPORT 1'-0" WIDE

DEEP SEWER - GREATER THAN 10'



WEST BAY
SANITARY DISTRICT

SANITARY SEWER
LATERAL CONNECTIONS

APPROVED BY:

/s/ - PHIL SCOTT
DISTRICT MANAGER

06-24-15
DATE: