

WEST BAY

SANITARY DISTRICT



Emergency Response Plan Pump Stations

Updated 5-3-17

Emergency Response Plan Pump Stations

The information provided within this document is for the sole purpose of responding to pump station failures and implementing protocols to mitigate sanitary sewer overflows.

The following pages include the equipment selection for by-passing each individual or multiple pump stations.

This document is a supplement to the Districts “Disaster Response Plan” (DRP) for pump stations; it is not all inclusive and shall be updated on an on-going basis.

Training shall be conducted on an on-going basis; observations will be noted and critiqued with those participating in the training exercise.

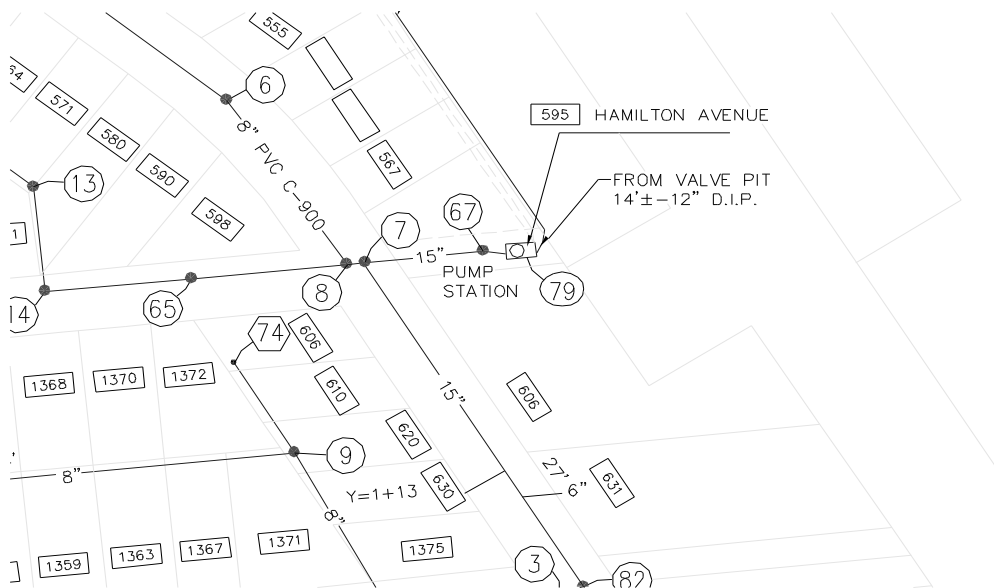


Updated 5-3-17

HAMILTON-HENDERSON PUMP STATION
 595 Hamilton Avenue x Willow Road
 Menlo Park, (B-13)



Required equipment for by-passing this station, 6-inch trash pump, suction hose & discharge hose (6" By-Pass)



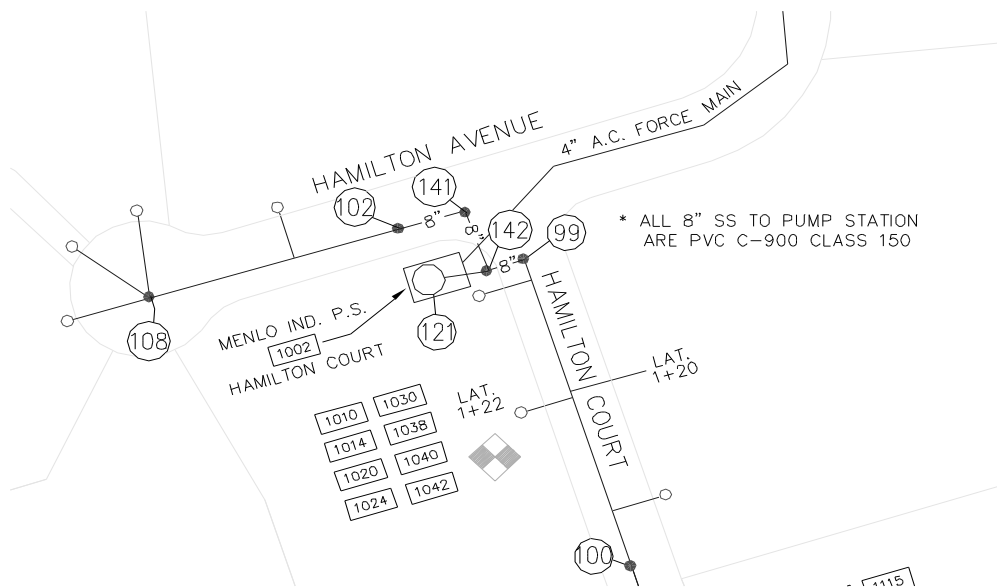
MENLO INDUSTRIAL PUMP STATION

1002 Hamilton Court x Hamilton Avenue

Menlo Park, (B-12)



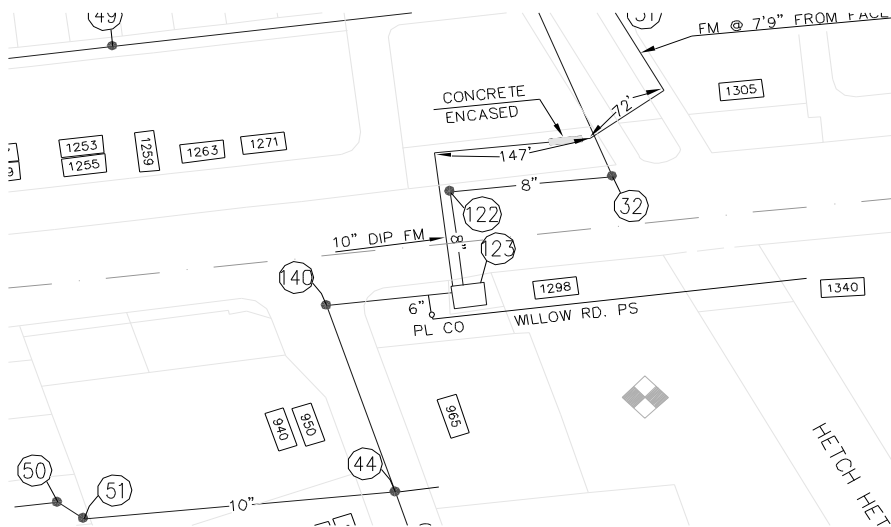
Required equipment for by-passing this station, 6-inch trash pump, **6”** suction hose & **4”** discharge hose, 2-6”X4” female to male camlocks. (4” By-Pass)



WILLOW ROAD PUMP STATION
1298 Willow Road x O'Brien Drive
Menlo Park, (B-12)



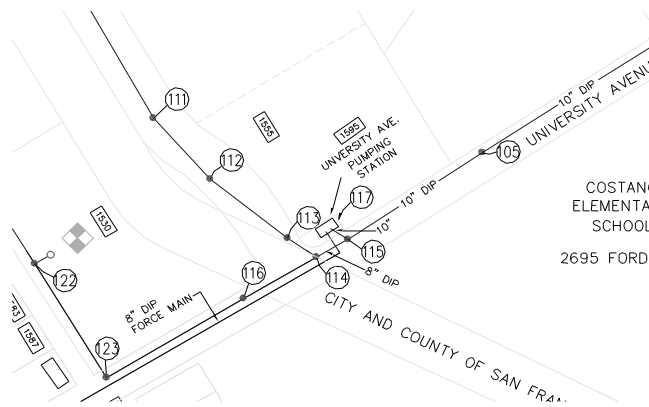
Required equipment for by-passing this station, 6-inch trash pump, 6" suction & discharge hose (6" By-Pass).



UNIVERSITY PUMP STATION
1595 O'Brien Drive x University Avenue
East Palo Alto, (B-11)



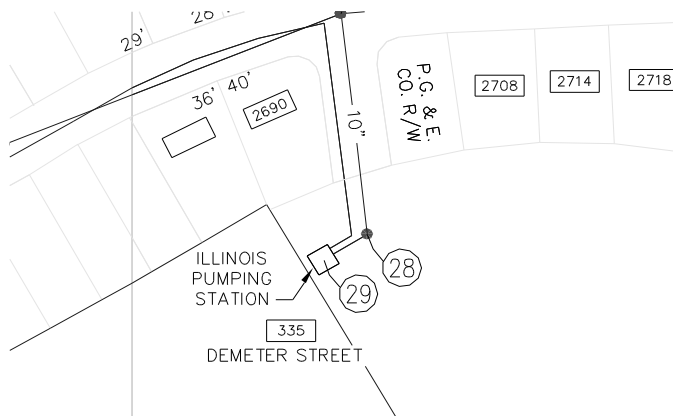
Required equipment for by-passing this station: 6-inch trash pump, 6” suction hose & 6” discharge hose.



ILLINOIS PUMP STATION
335 Demeter Street x Bay Road
East Palo Alto, (A-10)



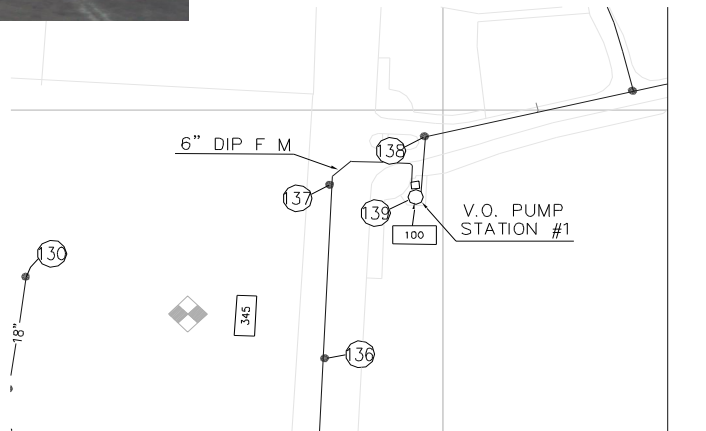
Required equipment for by-passing this station: 6-inch trash pump, 6" suction hose & discharge hose (6" By-Pass).



**VINTAGE OAKS-I
PUMP STATION**
100 Seminary Road x Middlefield Road
Menlo Park, (D-12)



Required equipment for by-passing this station, 6-inch trash pump, 2- 6"X4" camlocks fitting, 6" suction hose & 4" discharge hose (4" By-Pass).



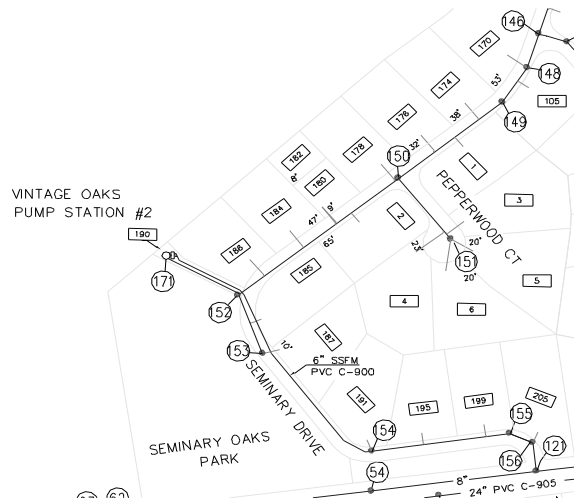
**VINTAGE OAKS-II
PUMP STATION**
190 Seminary Road x Middlefield Road
Menlo Park, (E-12)



Required equipment for by-passing this station, 6-inch trash pump, 2- 6"X4" camlocks fittings **6"**suction hose & **4"** discharge hose (4" By-Pass).



130

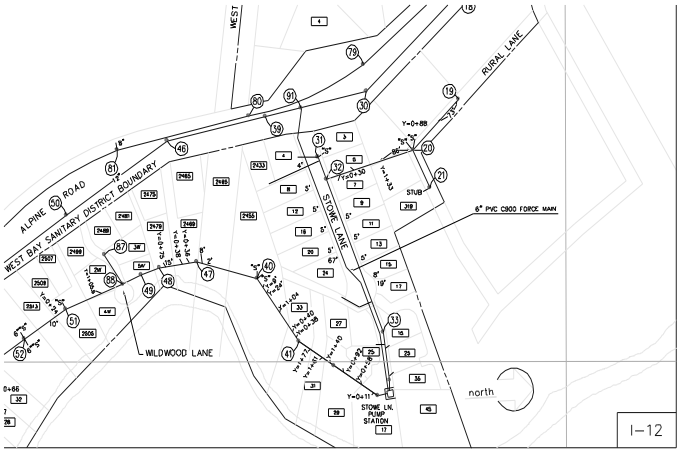


STOWE LANE LIFT STATION

17 Stowe Lane x Alpine Road
Menlo Park, (I-12)



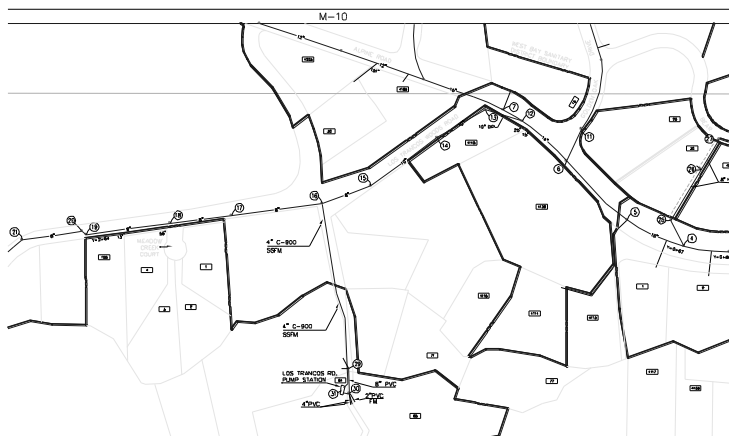
Required equipment for by-passing this station, 6-inch trash pump, 6” suction hose & discharge hose. (6” By-Pass).



LOS TRANCOS LIFT STATION
63 Los Trancos Road x Alpine Road
Portola Valley, CA (M-9)



Required equipment for by-passing this station, 6-inch trash pump, 2- 6"X4" camlocks fittings, 6" suction hose & 4" discharge hose (4" By-Pass).



SAUSAL VISTA LIFT STATION

250 Georgia Lane x Portola Road
Portola Valley (N-11)



Required equipment for by-passing this station, 6-inch trash pump, 2- 6"X4" camlocks fittings, 6" suction hose & 6" discharge hose (6" By-Pass).



Force main discharges into manhole N 10137
4050 feet away from station

VILLAGE SQUARE LIFT STATION
884 Portola Road x Alpine Road
Portola Valley (M-13)



Required equipment for by-passing this station, Truck #205 (Vactor)





Updated 5-3-17